

# TKI-3

Pilot Noorderzijlvest

# Pilot NZV

**Doel:** Bouw RR1D D-Hydro model voor boezemsysteem NZV

## **Stappen:**

- Validatie beheerregister met Sobek Tools
- Bouw 1D model via D-HYDAMO
- Inbouwen compound structures
- Inbouwen meervoudige sturing
- Bouwen RR model

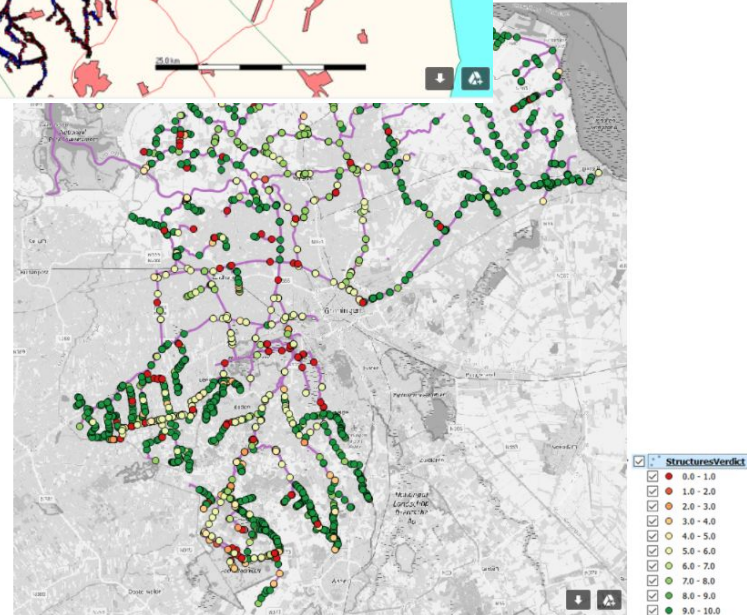
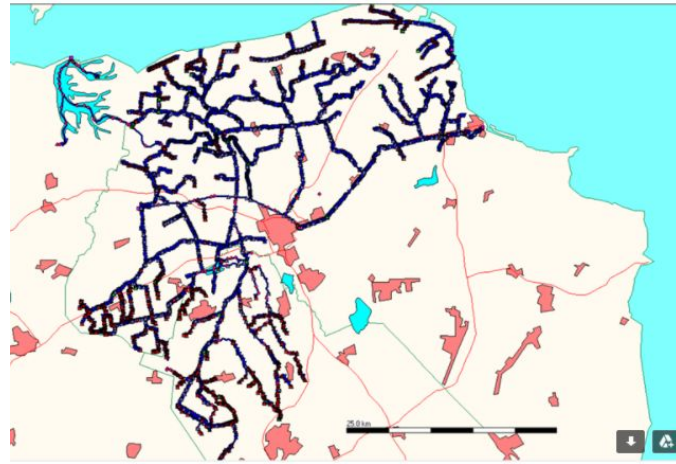
# Validatie beheerregister

**Hoe:** Sobek Tools

**Wat:**

- validatierapport
- Sobek model

**Waarom:** Valide beheerregister als startpunt bouw D-HYDRO model



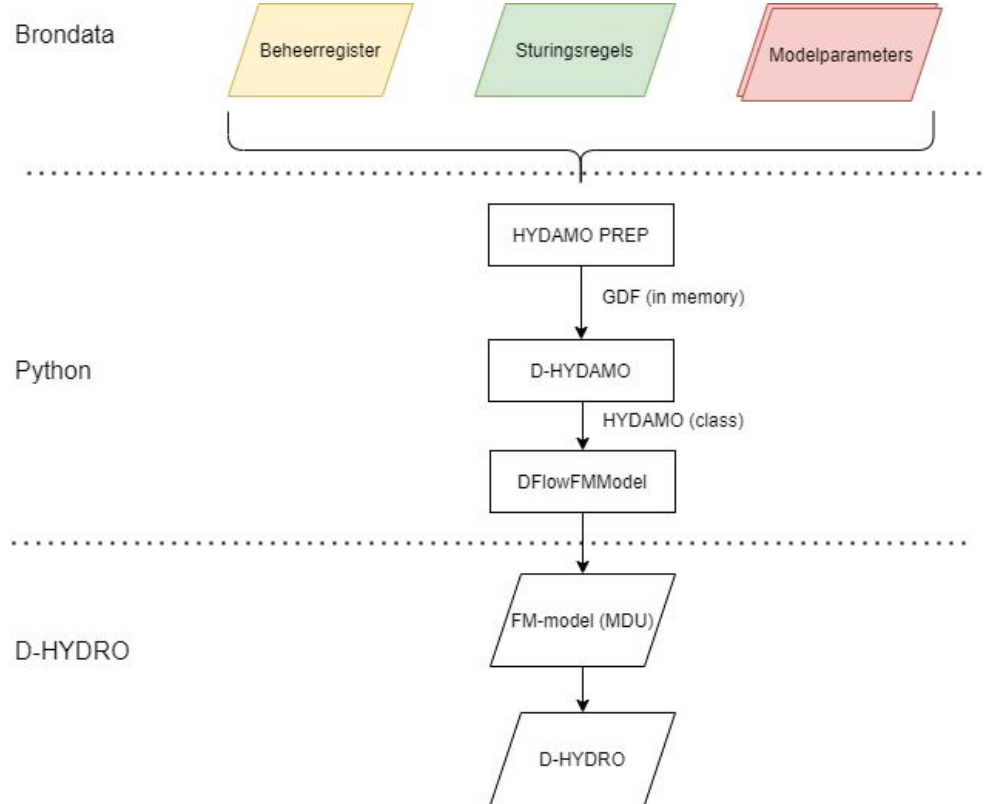
# Bouw 1D model (workflow)

## Python onderdelen:

- HYDAMO PREP (wij)

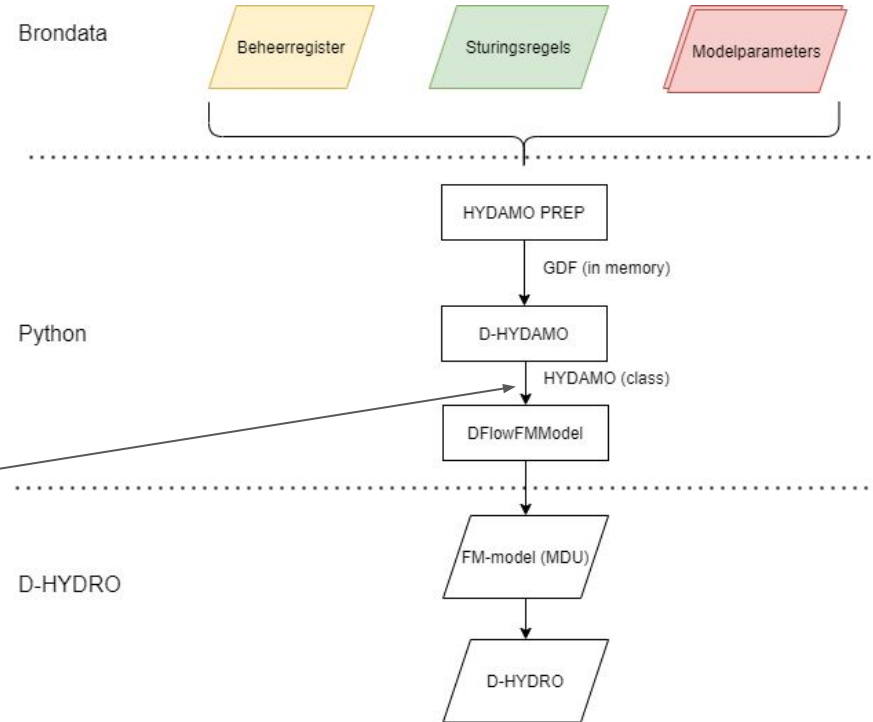
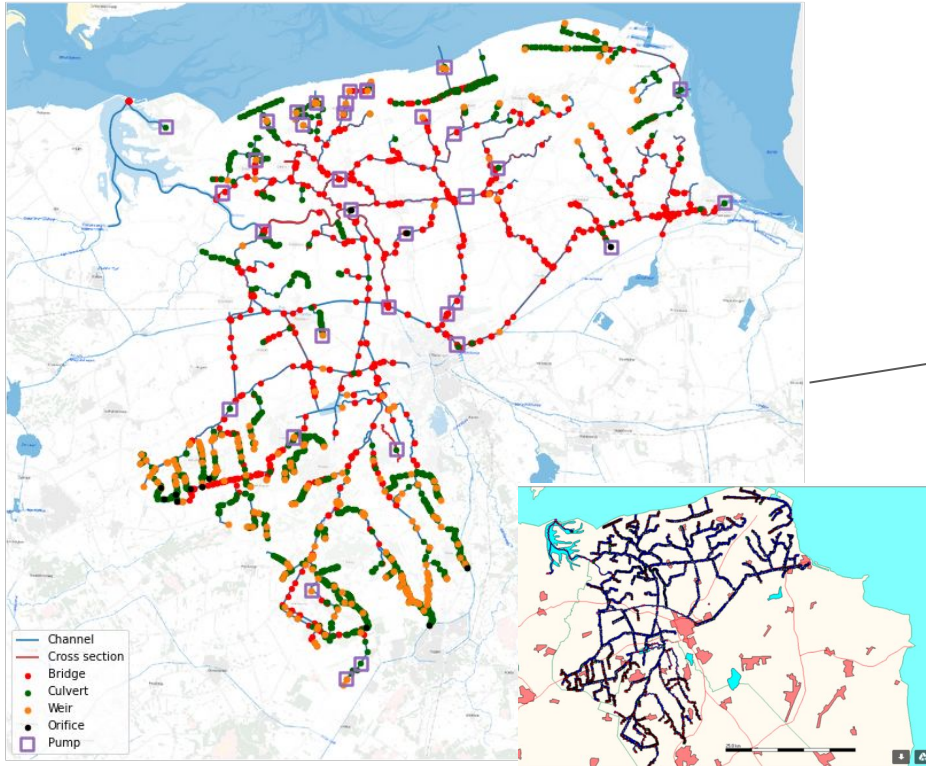
*Converteert het beheerregister naar het HyDAMO datamodel*

- D-HYDAMO (HKV)
- DFlowFMModel (Deltares)



# Bouw 1D model (al gedaan)

## Gevulde HYDAMO klasse

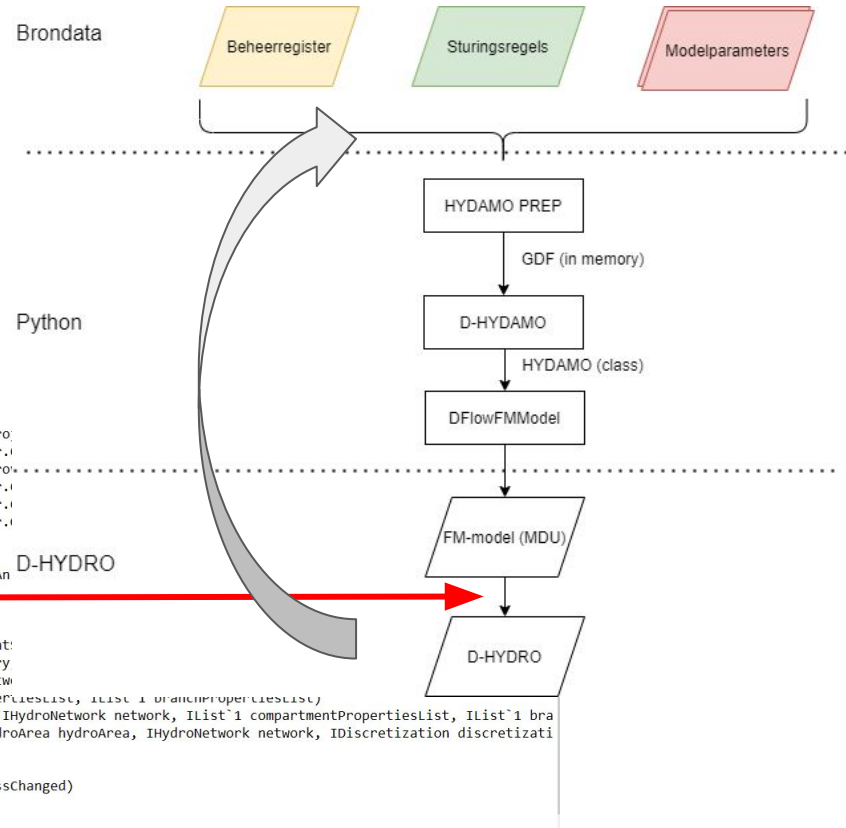


# Bouw 1D model (stand van zaken)

Vertrekpunt 09/10/2020:

1. ERROR oplossen bij importeren MDU (support Deltares)
2. Bezem door de workflow met nieuwe data

```
2020-10-08 20:38:52,828 [1] INFO deltasnell.gui.deltasnellgui.kun - Started in 8.91 sec
2020-10-08 20:38:32,830 [1] INFO DeltaShell.Core.DeltaShellApplication.Shutdown - Hiding splash screen ...
2020-10-08 20:40:38,663 [1] INFO DeltaShell.Core.Services.HybridProjectRepository.FireProjectSaving - Saving project Pro
2020-10-08 20:40:38,670 [1] INFO DeltaShell.Plugins.Data.NHibernate.DelftTools.Shell.Core.Dao.NHibernateSessionProvider.i
2020-10-08 20:40:38,775 [1] INFO DeltaShell.Plugins.Data.NHibernate.DelftTools.Shell.Core.Dao.NHibernateConfigurationPro
2020-10-08 20:40:38,785 [1] INFO DeltaShell.Plugins.Data.NHibernate.DelftTools.Shell.Core.Dao.NHibernateSessionProvider.i
2020-10-08 20:40:38,793 [1] INFO DeltaShell.Plugins.Data.NHibernate.DelftTools.Shell.Core.Dao.NHibernateSessionProvider.i
2020-10-08 20:40:38,845 [1] INFO DeltaShell.Plugins.Data.NHibernate.DelftTools.Shell.Core.Dao.NHibernateSessionProvider.i
2020-10-08 20:40:39,404 [1] INFO DeltaShell.Core.Services.HybridProjectRepository.DoSaving - Project Project1 saved
2020-10-08 20:41:03,795 [1] INFO DeltaShell.Gui.GuiImporterHandler.ConfigureImporterAndRun - Start importing data
2020-10-08 20:41:05,132 [12] ERROR DeltaShell.Plugins.FMSuite.FlowFM.IO.Importers.WaterFlowFMFileImporter.ImportItem - An
System.ArgumentException: An item with the same key has already been added.
   at System.ThrowHelper.ThrowArgumentException(ExceptionResource resource)
   at System.Collections.Generic.Dictionary`2.Insert(TKey key, TValue value, Boolean add)
   at System.Linq.Enumerable.ToDictionary[TSource,TKey,TElement](IEnumerable`1 source, Func`2 keySelector, Func`2 element
   at DeltaShell.NGHS.IO.Grid.DeltaresUGrid.HydroUGridExtensions.CreateBranches(DisposableNetworkGeometry networkGeometry
   at DeltaShell.NGHS.IO.Grid.DeltaresUGrid.HydroUGridExtensions.SetNetworkGeometry(IHydroNetwork network, DisposableNetw
   at DeltaShell.NGHS.IO.Grid.UGridFileHelper.ReadNetwork(IUGridApi api, IHydroNetwork network, IList`1 compartmentPropertiesList,
   at DeltaShell.NGHS.IO.Grid.UGridFileHelper.ReadNetworkAndDiscretisation(String path, IDiscretization discretization, IHydroNetwork network, IList`1 compartmentPropertiesList, IList`1 bra
   at DeltaShell.Plugins.FMSuite.FlowFM.IO.Mdufile.Read(String filePath, WaterFlowFMModelDefinition modelDefinition, HydroArea hydroArea, IHydroNetwork network, IDiscretization discretizati
   at DeltaShell.Plugins.FMSuite.FlowFM.WaterFlowFMModel.LoadModelFromMdu(String mduFilePath)
   at DeltaShell.Plugins.FMSuite.FlowFM.WaterFlowFMModel.LoadStateFromMdu(String mduFilePath)
   at DeltaShell.Plugins.FMSuite.FlowFM.WaterFlowFMModel..ctor(String mduFilePath, ImportProgressChangedDelegate progressChanged)
   at DeltaShell.Plugins.FMSuite.FlowFM.IO.Importers.WaterFlowFMFileImporter.ImportItem(String path, Object target)
```



# Vervolgstappen pilot NZV

- **Inbouwen compound structures:**

*via DFlowFMModel klasse (Python)*

- **Inbouwen meervoudige sturing:**

*Te ontwikkelen (Python)*

- **Bouwen RR model**

*D-HYDAMO/Ontwikkelen*

En dan....

Pilot Hunze en Aa's