

Bathymetry obtained from stereophotographs

Fixed rock
10-60 kg

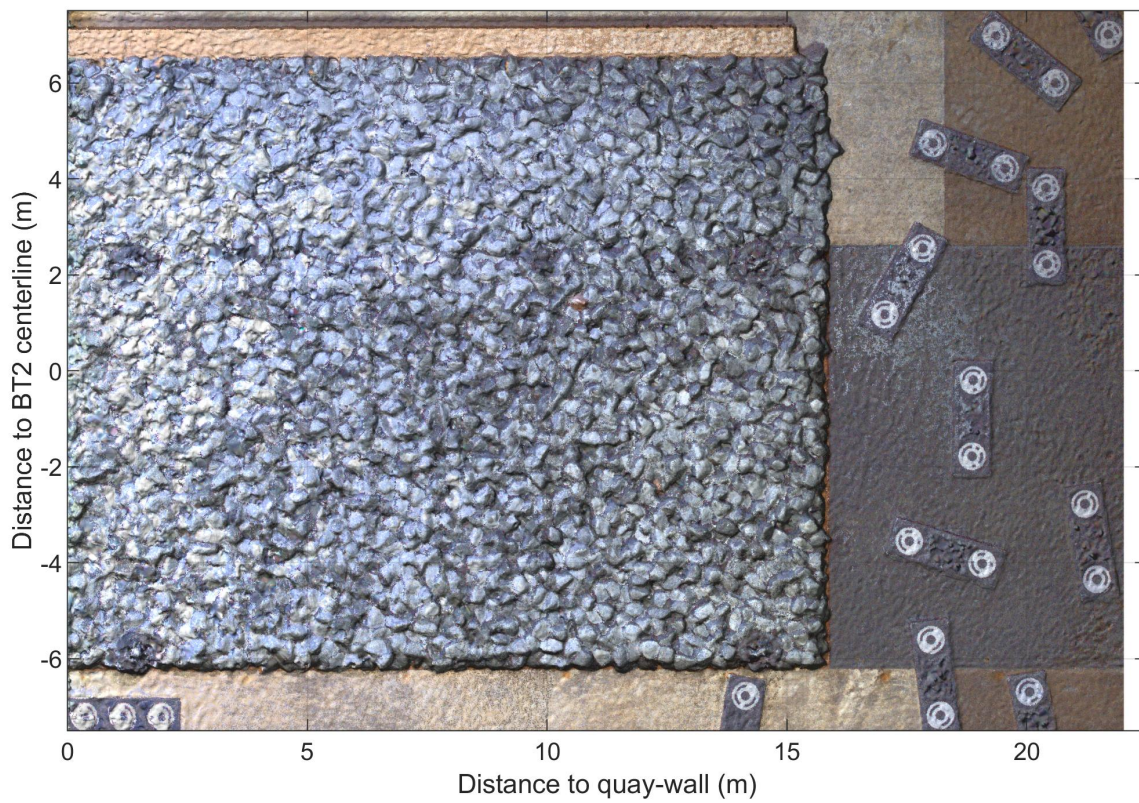
TKI-SOP

Before A01

Deltares

11206641

Fig. K



Color image obtained from stereophotographs

Fixed rock
10-60 kg

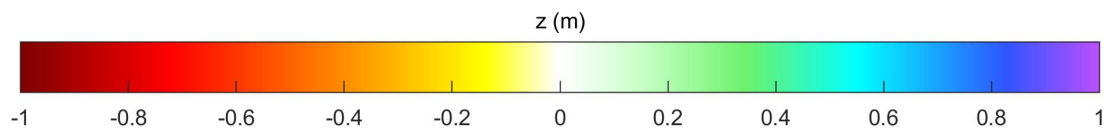
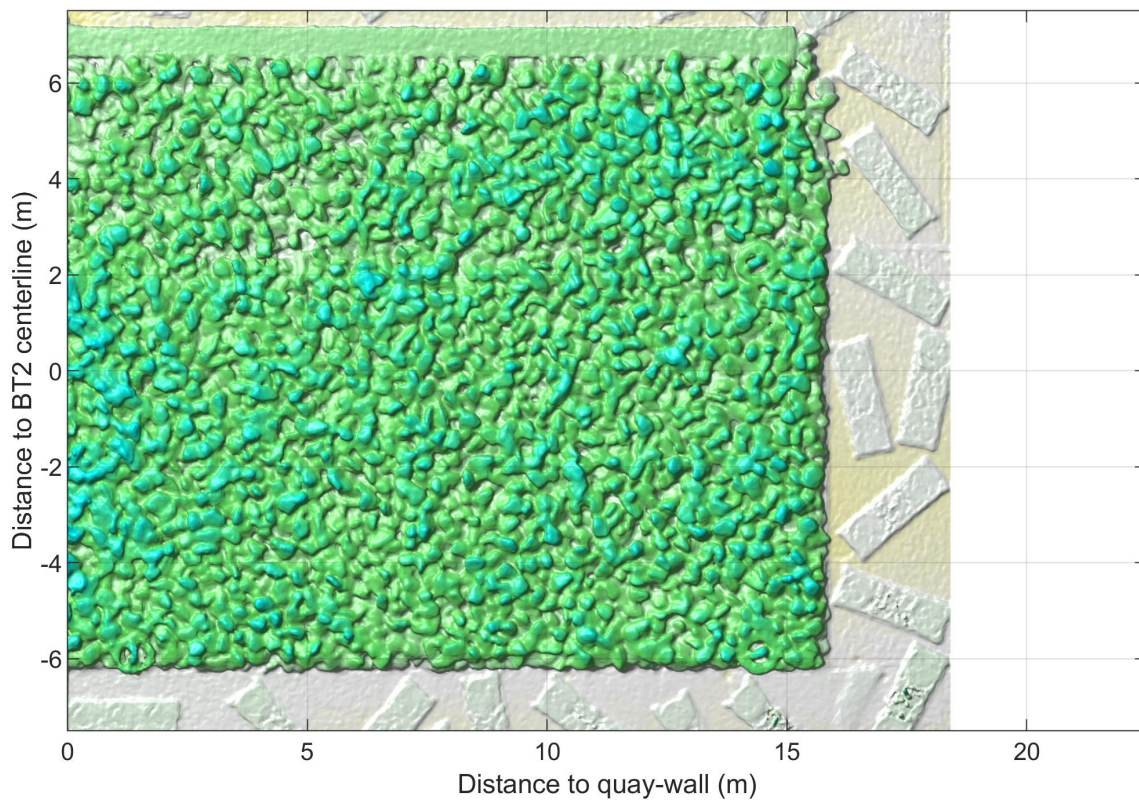
TKI-SOP

Before A01

Deltares

11206641

Fig. K



Bathymetry obtained from stereophotographs

Fixed rock
10-60 kg

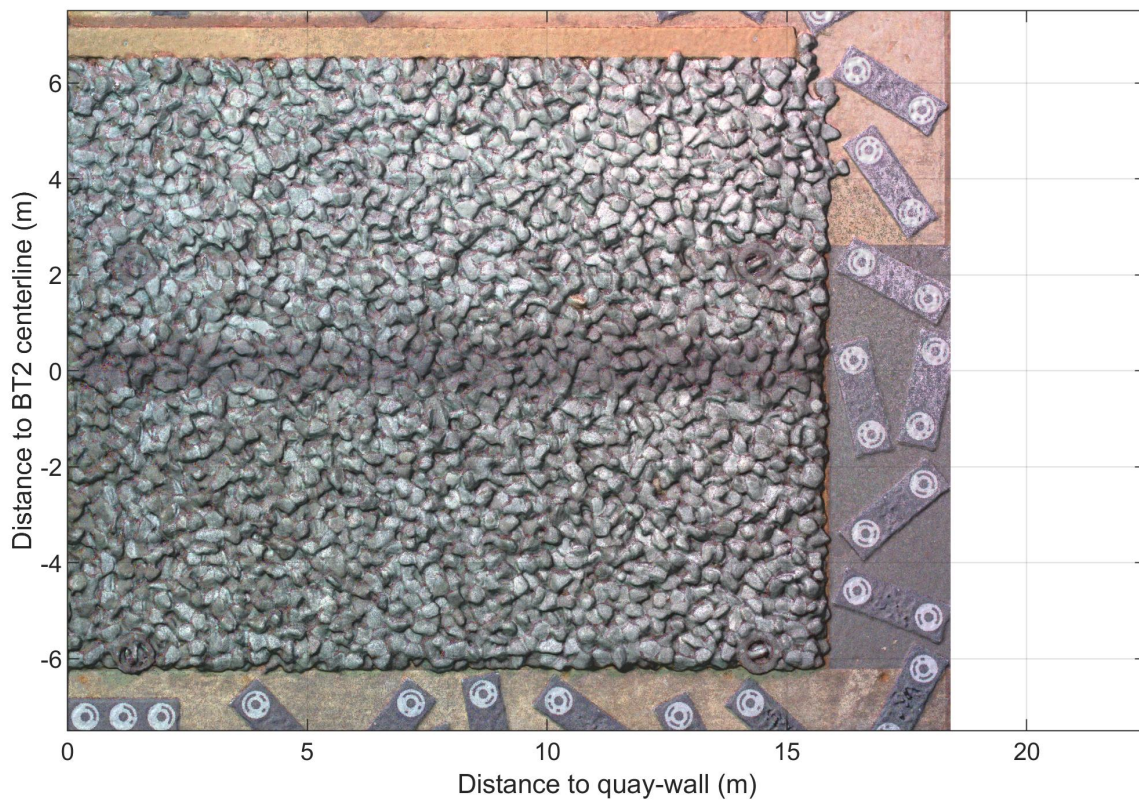
TKI-SOP

Before B01

Deltares

11206641

Fig. K



Color image obtained from stereophotographs

Fixed rock
10-60 kg

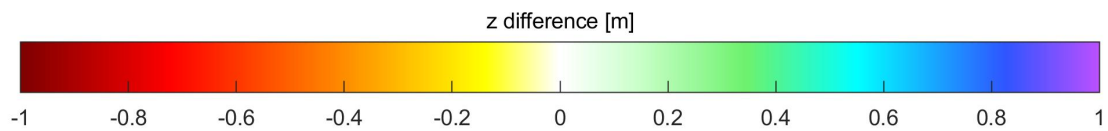
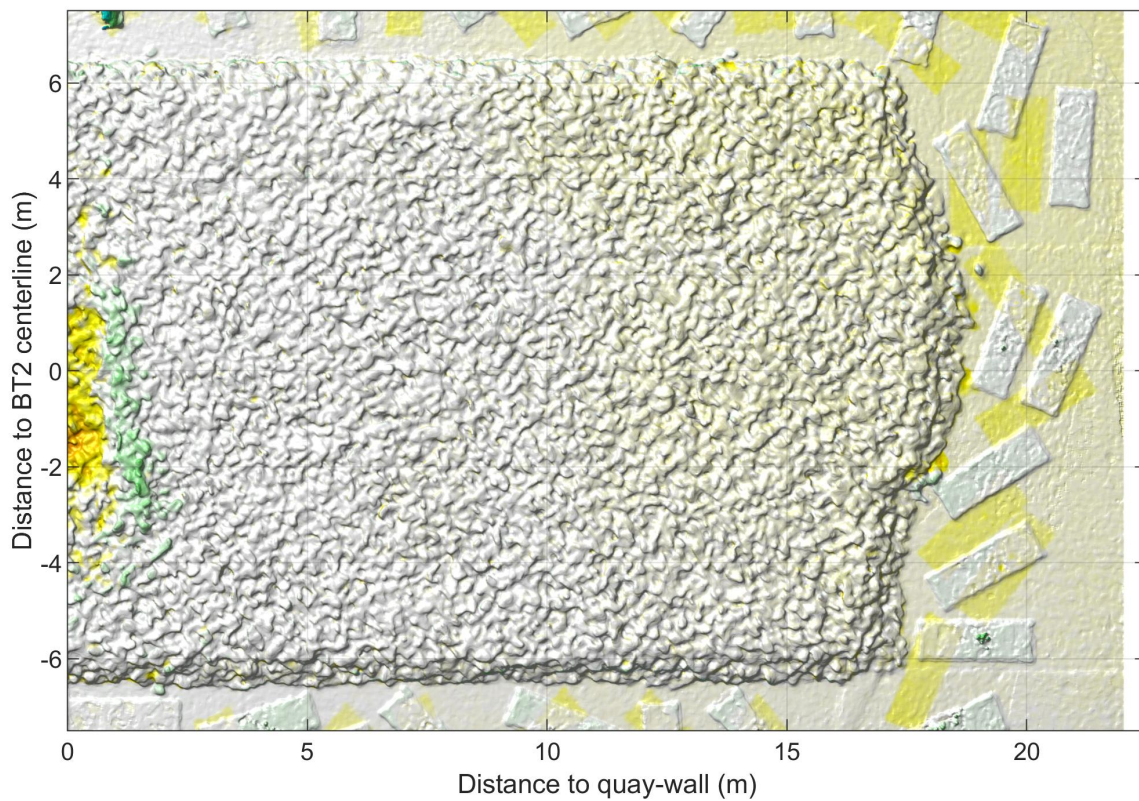
TKI-SOP

Before B01

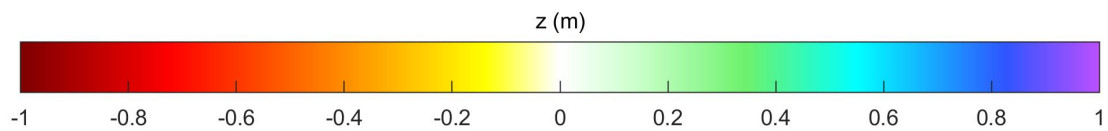
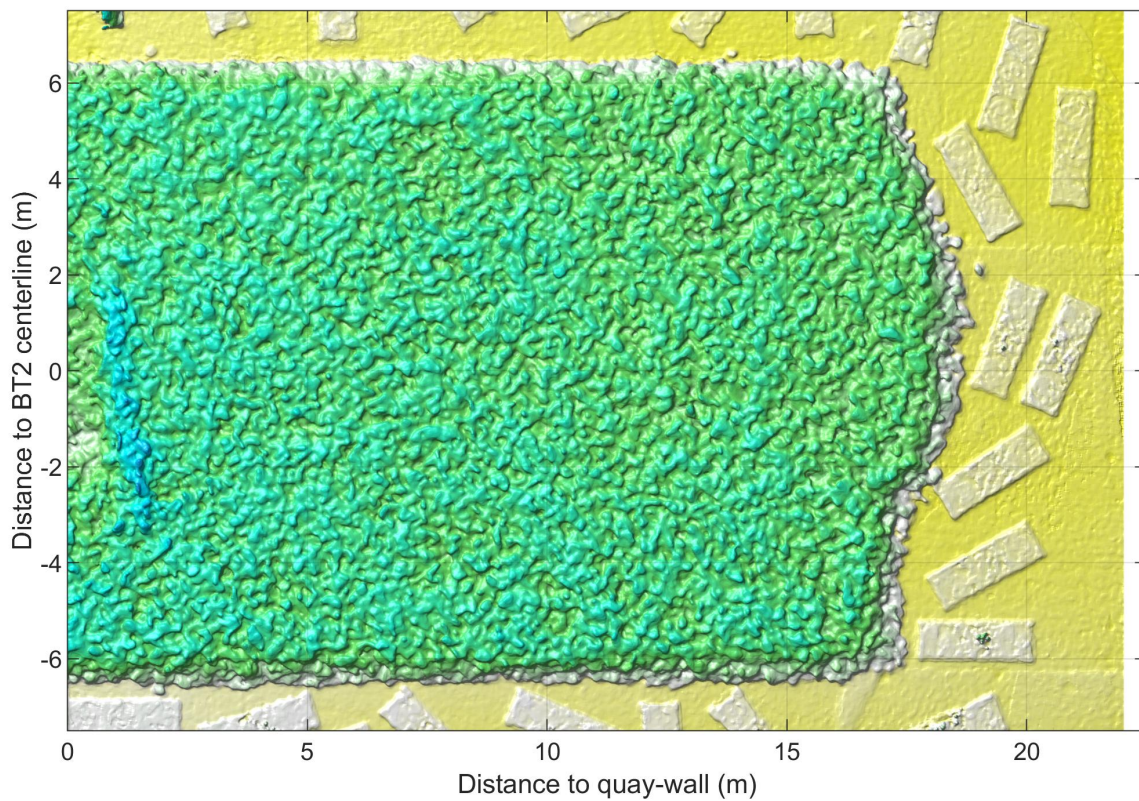
Deltares

11206641

Fig. K



Bathymetry difference obtained from stereophotographs Active thruster: BT2 Delta x = 0.794m UKC = 2.5m UBT2 = 3.8m/s	Difference	TKI-SOP
	After C01 - Before C01	
Deltares	11206641	Fig. K



Bathymetry obtained from stereophotographs
 Active thruster: BT2
 Delta x = 0.794m UKC = 2.5m UBT2 = 3.8m/s

Loose rock
 90-250mm

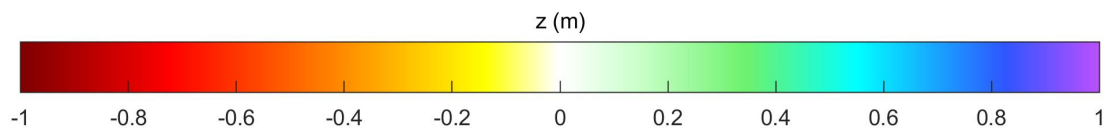
TKI-SOP

After C01

Deltares

11206641

Fig. K



Bathymetry obtained from stereophotographs
 Active thruster: BT2
 Delta x = 0.794m UKC = 2.5m UBT2 = 3.8m/s

Loose rock
 90-250mm

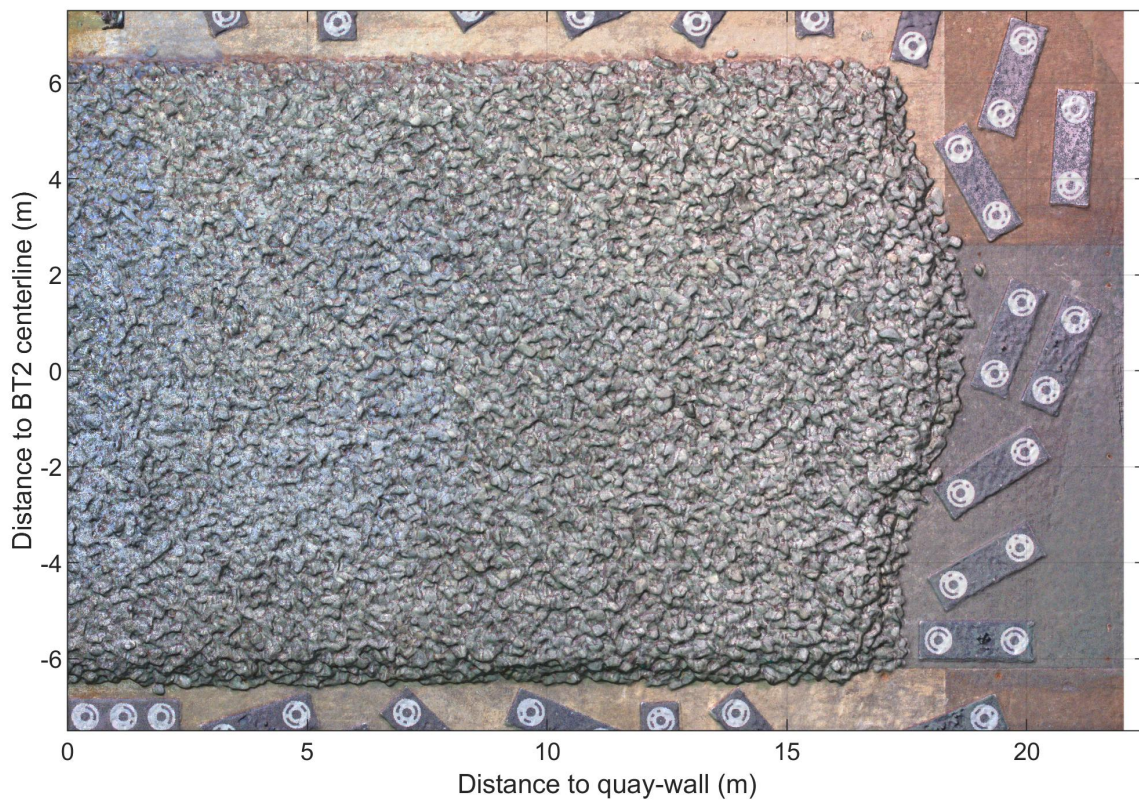
TKI-SOP

Before C01

Deltares

11206641

Fig. K



Color image obtained from stereophotographs
 Active thruster: BT2
 Delta x = 0.794m UKC = 2.5m UBT2 = 3.8m/s

Loose rock
 90-250mm

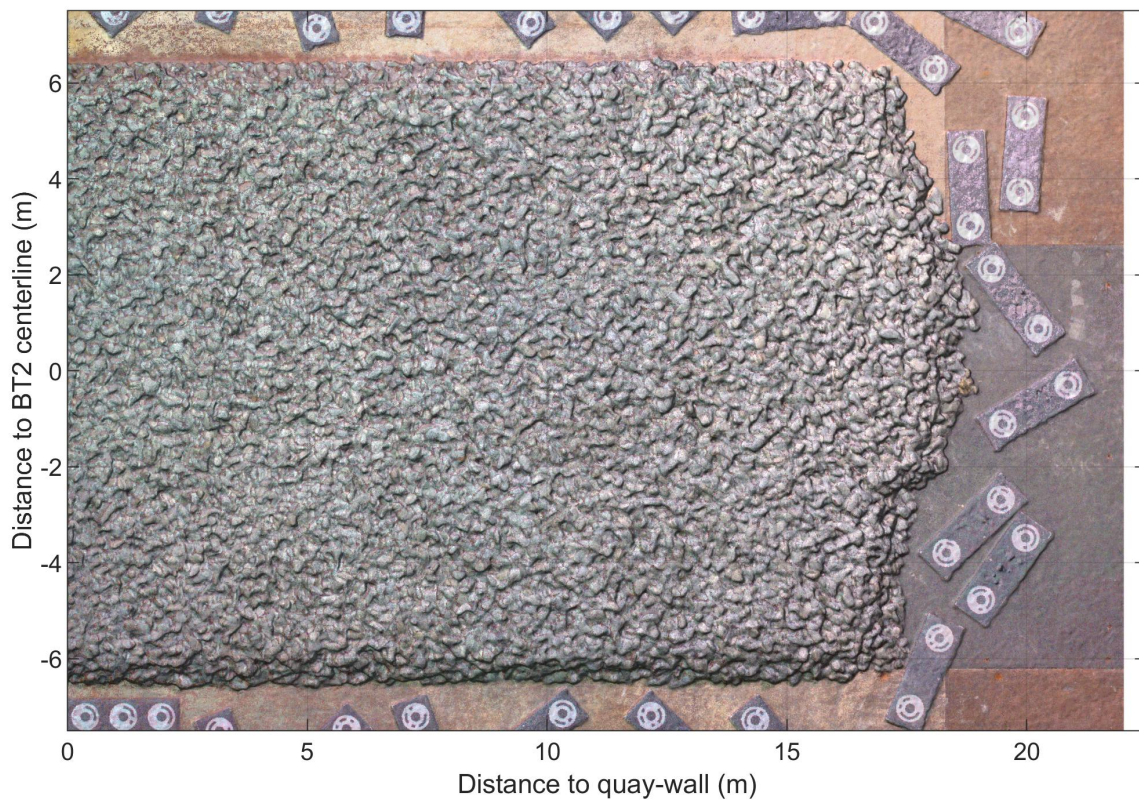
TKI-SOP

After C01

Deltares

11206641

Fig. K



Color image obtained from stereophotographs
 Active thruster: BT2
 Delta x = 0.794m UKC = 2.5m UBT2 = 3.8m/s

Loose rock
 90-250mm

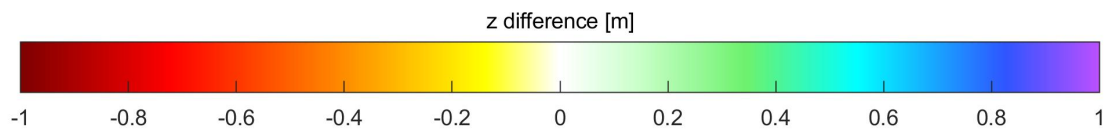
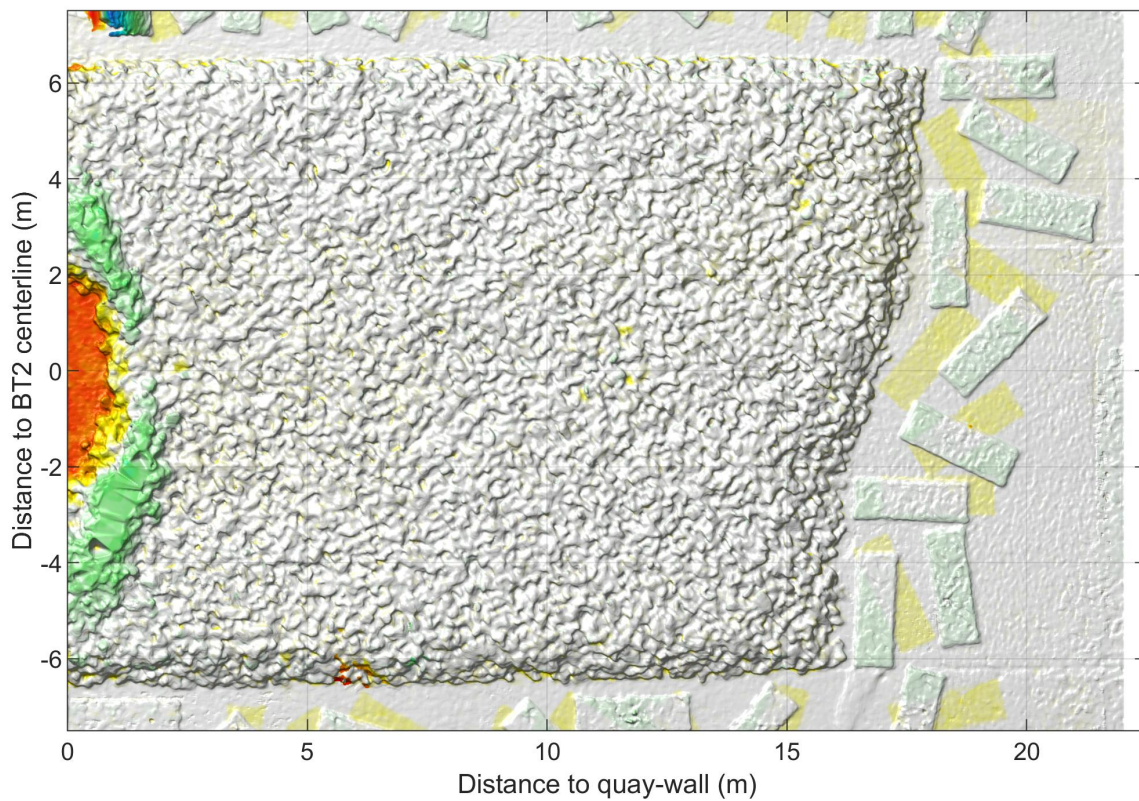
TKI-SOP

Before C01

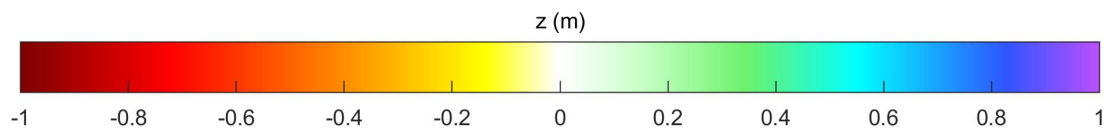
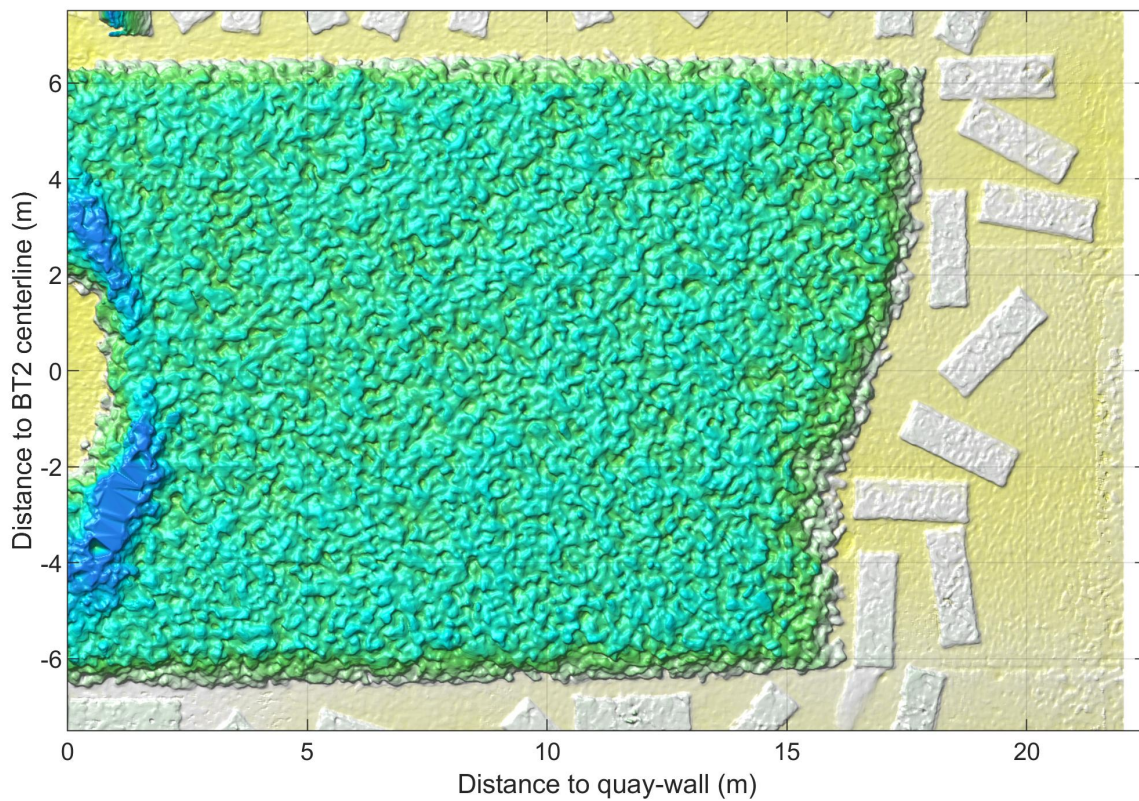
Deltares

11206641

Fig. K



Bathymetry difference obtained from stereophotographs Active thruster: BT2 Delta x = 0.794m UKC = 0.5m UBT2 = 3.8m/s	Difference	TKI-SOP
	After D01 - Before D01	
Deltares	11206641	Fig. K



Bathymetry obtained from stereophotographs
 Active thruster: BT2
 Delta x = 0.794m UKC = 0.5m UBT2 = 3.8m/s

Loose rock
 90-250mm

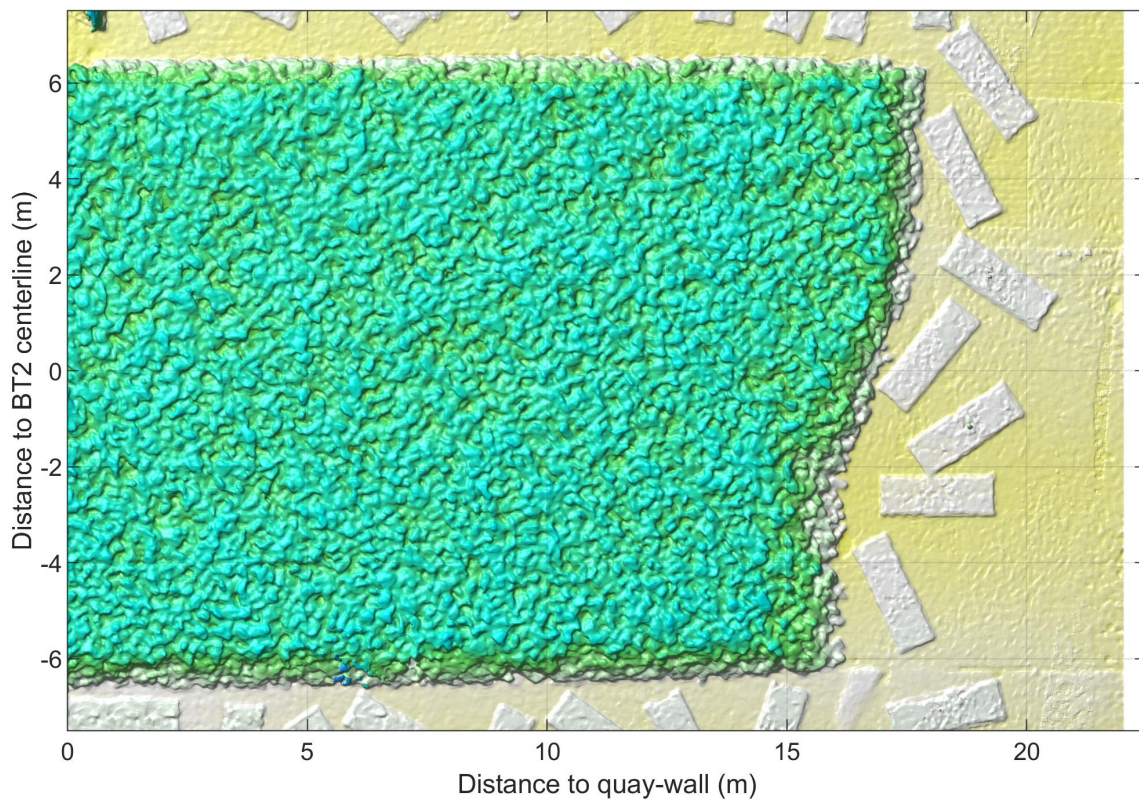
TKI-SOP

After D01

Deltares

11206641

Fig. K



Bathymetry obtained from stereophotographs
 Active thruster: BT2
 Delta x = 0.794m UKC = 0.5m UBT2 = 3.8m/s

Loose rock
 90-250mm

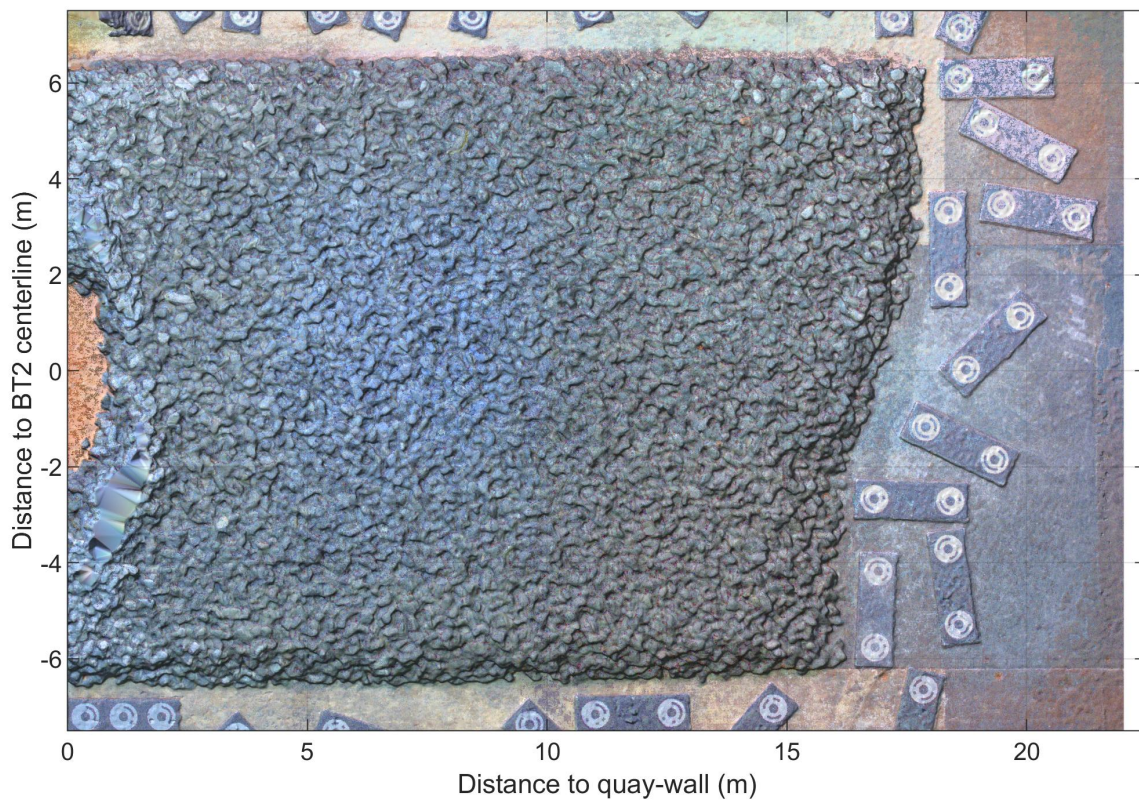
TKI-SOP

Before D01

Deltares

11206641

Fig. K



Color image obtained from stereophotographs
 Active thruster: BT2
 Delta x = 0.794m UKC = 0.5m UBT2 = 3.8m/s

Loose rock
 90-250mm

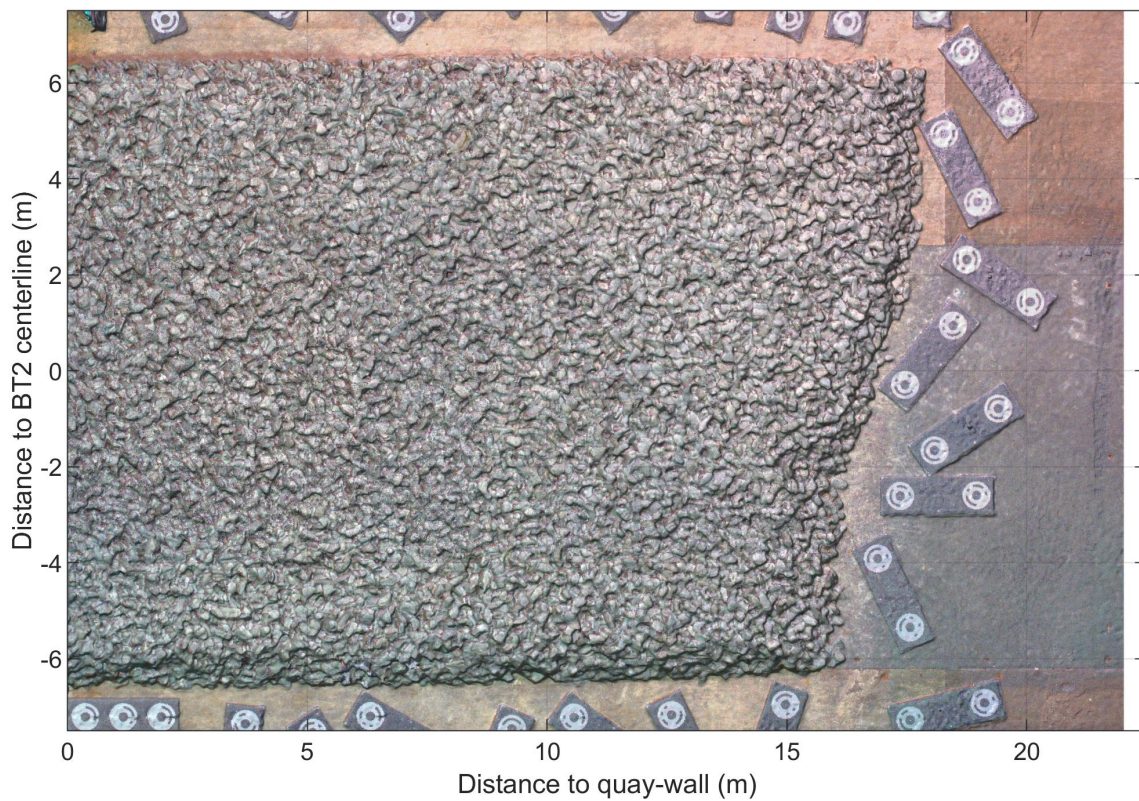
TKI-SOP

After D01

Deltares

11206641

Fig. K



Color image obtained from stereophotographs
 Active thruster: BT2
 Delta x = 0.794m UKC = 0.5m UBT2 = 3.8m/s

Loose rock
 90-250mm

TKI-SOP

Before D01

Deltares

11206641

Fig. K