






## In search of a salt-tolerant potato


To reduce the fresh water demand in coastal areas with a high saline content



VU VRILJE UNIVERSITEIT AMSTERDAM 03/10/2016

Thesis research Edvard Ahlrichs

## Test location




SAFFINGHE ZILT

VU

## Methods

### Field conditions

2016	Totaal (kg)	EC calc. (mS/cm)	kg/m <sup>2</sup>
EC 5	600	25,99	1,23
EC 7	1300	32,53	1,60



03/10/2016 VU Deltares

## Field layout

Layout test field salt potato



03/10/2016 VU Deltares

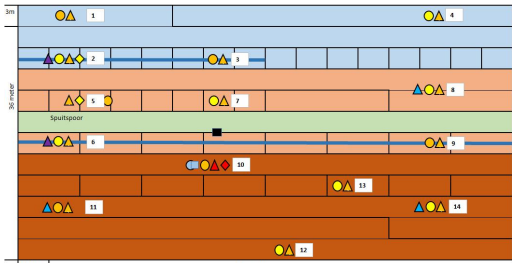
## Measurement locations

Layout Measurement Points

EC range: EC 1, EC 5, EC 7



Logger kast: Decagon G63 -15 cm, Decagon G63 +10 cm -15 cm, Decagon MP58 +10 cm en -15 cm, Pico -15 cm

Pico -10, -20, -30 en -40 cm; Macro Rhizon +10, -15, -30 en -45 cm; Macro Rhizon -5, -10, -15, -20, -30 en -45 cm; Macro Rhizon onder irrigator/volley 5, 15, 30 en 45 cm; Macro Rhizon onder valley -15, -30 en -45 cm



03/10/2016 VU Deltares

## Sensors and Rhizons

Two ridges lengthwise: 1,5 meter

Installing sensors

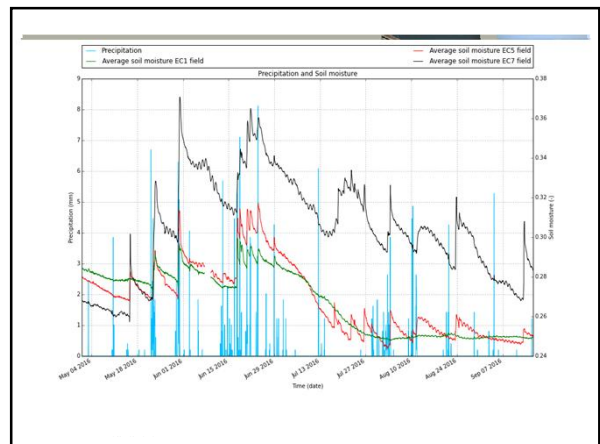
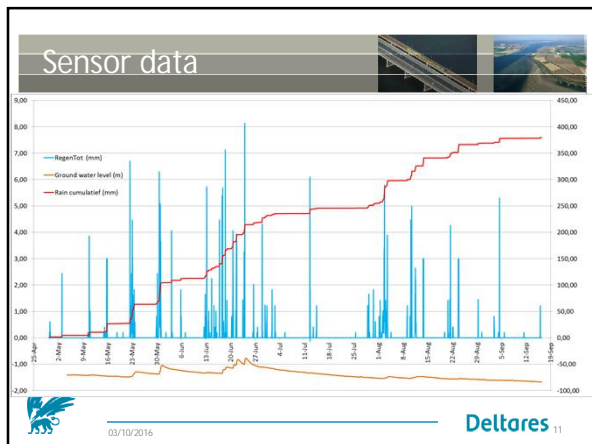
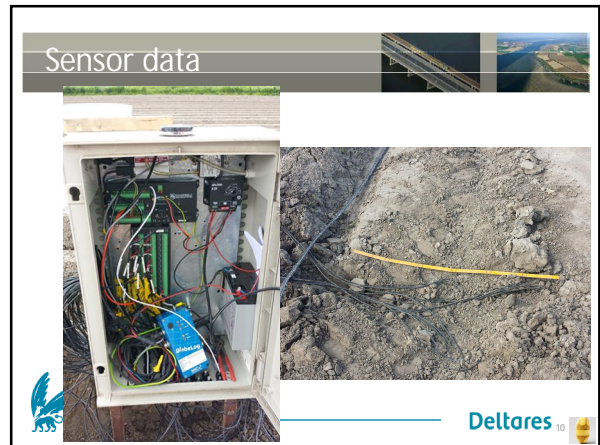
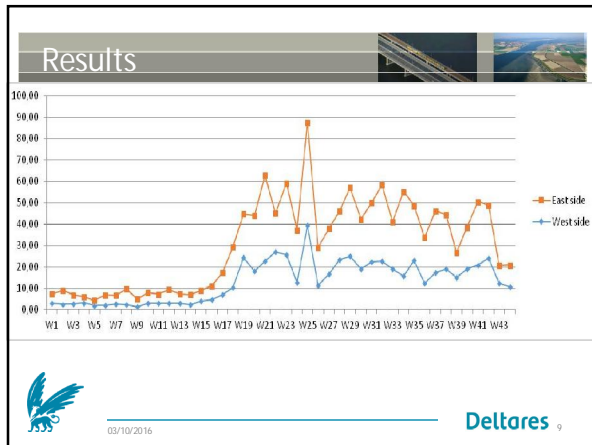
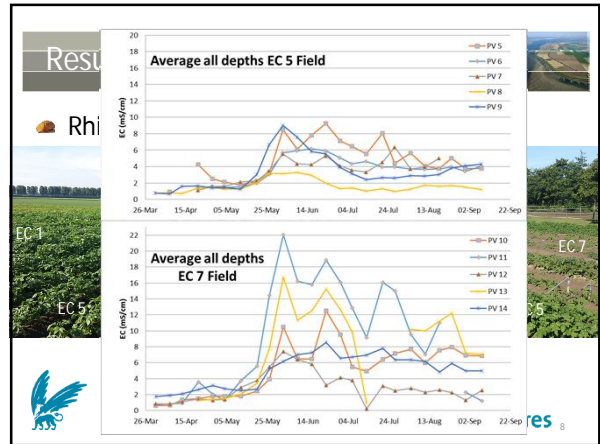
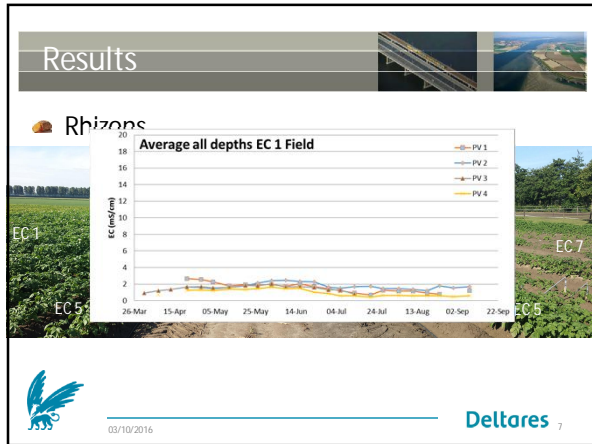
Depth (cm): 40, 30, 20, 10, 0, -10, -20, -30, -40, -50

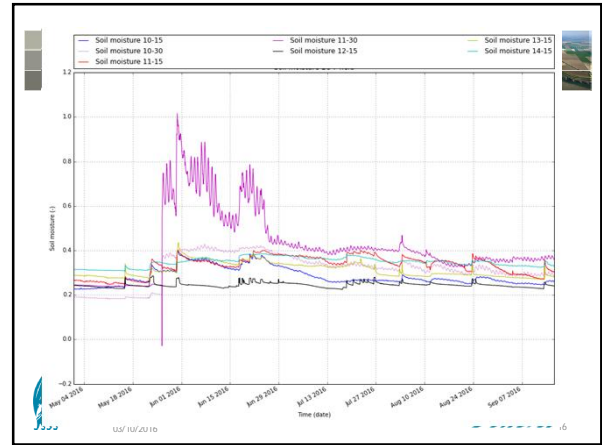
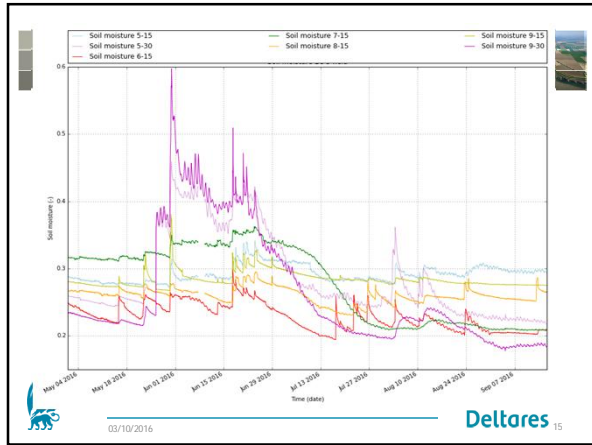
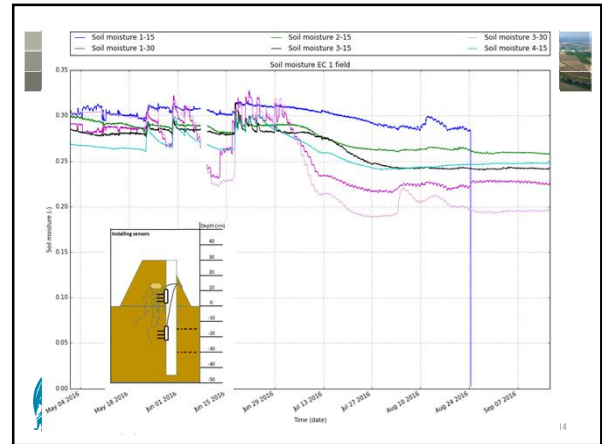
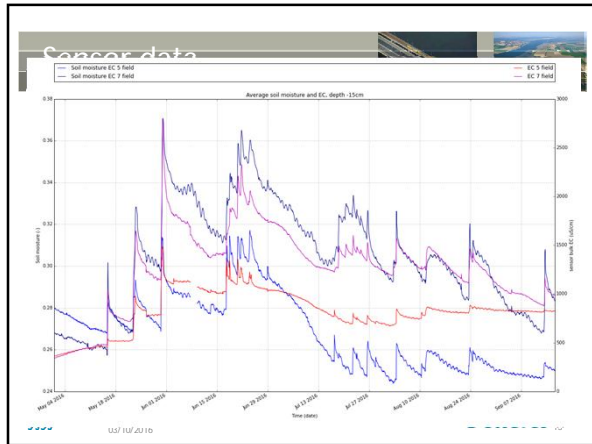
Side view (cm): 1,5 meter

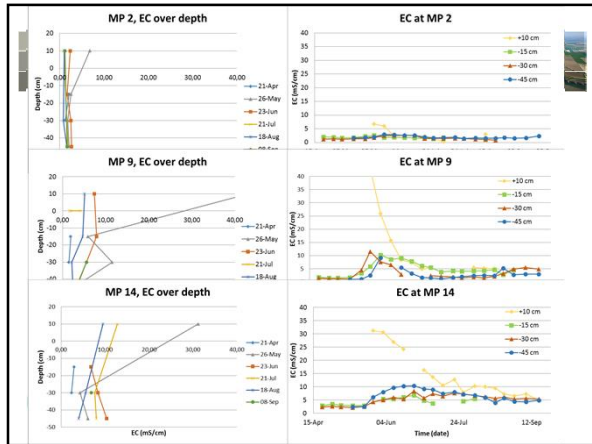
Installing Macro Rhizons

Depth (cm): 40, 30, 20, 10, 0, -10, -20, -30, -40, -50

03/10/2016 VU







Questions?

A small image of a water meter is shown on the left. To its right is a large question mark formed by a curved line of potato chips. The slide includes the Deltares logo and the date 03/10/2016.