

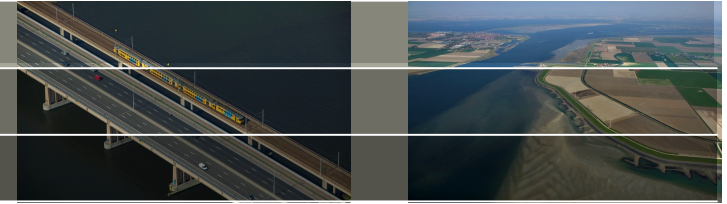


Delft-FEWS 2012.01

Gerben Boot
FEWS Productmanagement

Delft-FEWS Gebruikersdag 2012

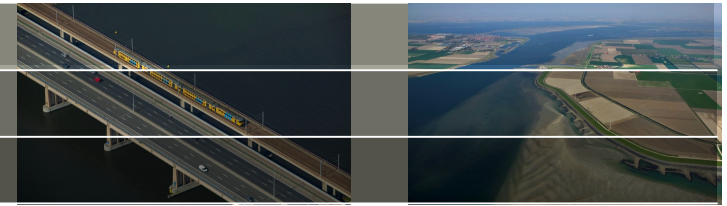
Facts, Figures & Features



- \pm 140 new features
- \pm 50 bugs
- Release Process improved
 - Release Notes \rightarrow Documentation
 - Testing (components, integration, ...)

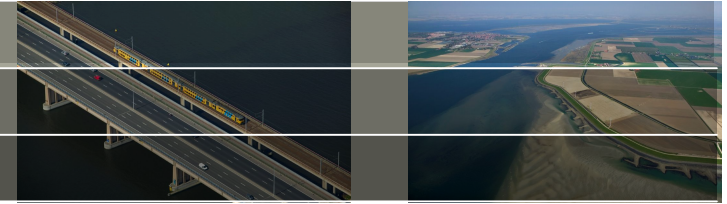
RELEASE PLANNED FOR 25th of JUNE

System



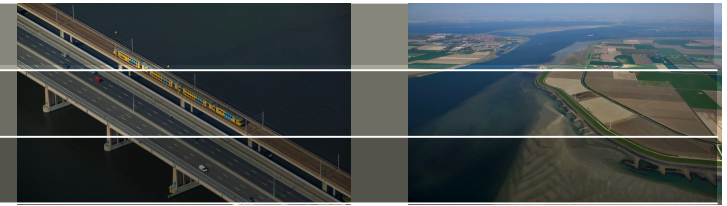
- Derby as 3rd option as localdatastore (FSS,Client)
- Admin Interface deployment in Tomcat 7
- PostgreSQL 9.2 Support
- Direct Database Access Improved
- Hot-start FSS
- MC-MC synchronisation as stand-alone process
- Improved handling of 'temporary' timeseries
- Improved logging when workflows end successfully

Database



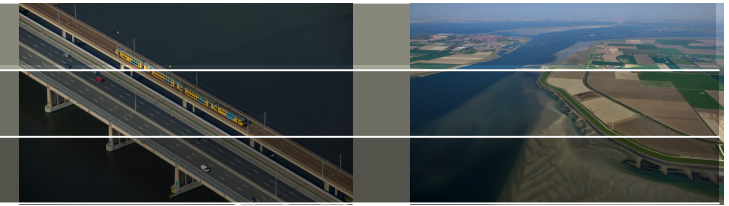
- Open Database
 - Configuration → all tables included (filters, locations, samples)
 - Timeseries
- Direct Database
 - MS SQL implementation ready

Explorer

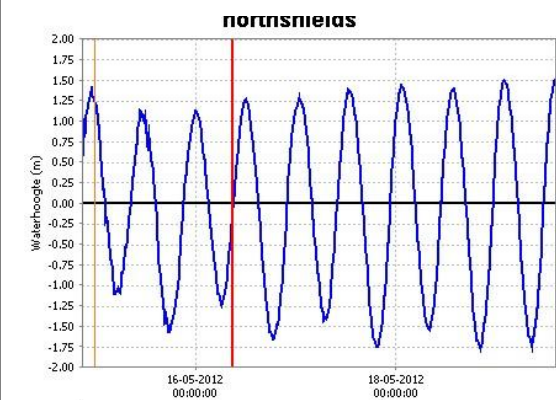
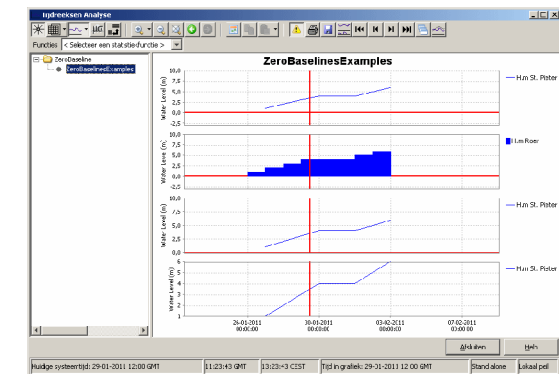
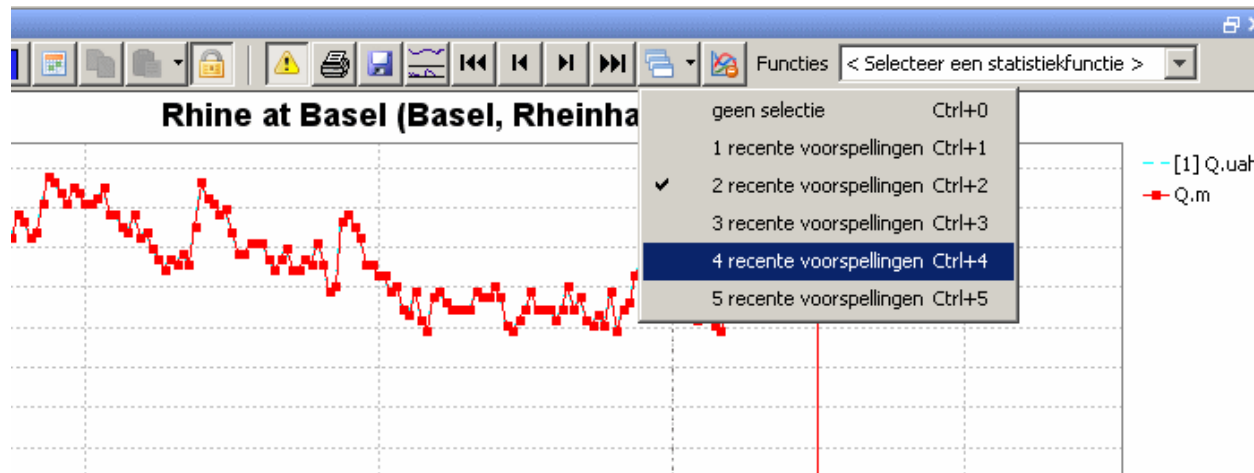


- Icons on the explorer map are no longer grayed out when the system time is automatically adjusted. The system time in the status bar now has a magenta background while the icons are updated.
- Support of the Chinese Language (GUI)
- Display actual values for stations in labels
- Start TimeSeries Display with Statistical Function
- Open URL with location identifier by using locationAttribute tag

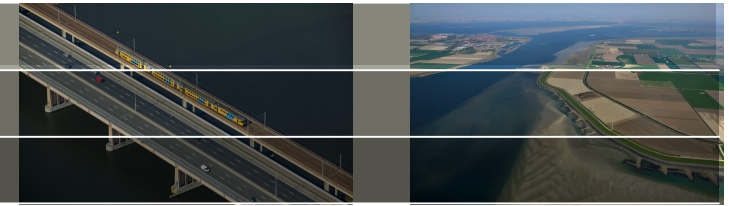
TimeSeries Display



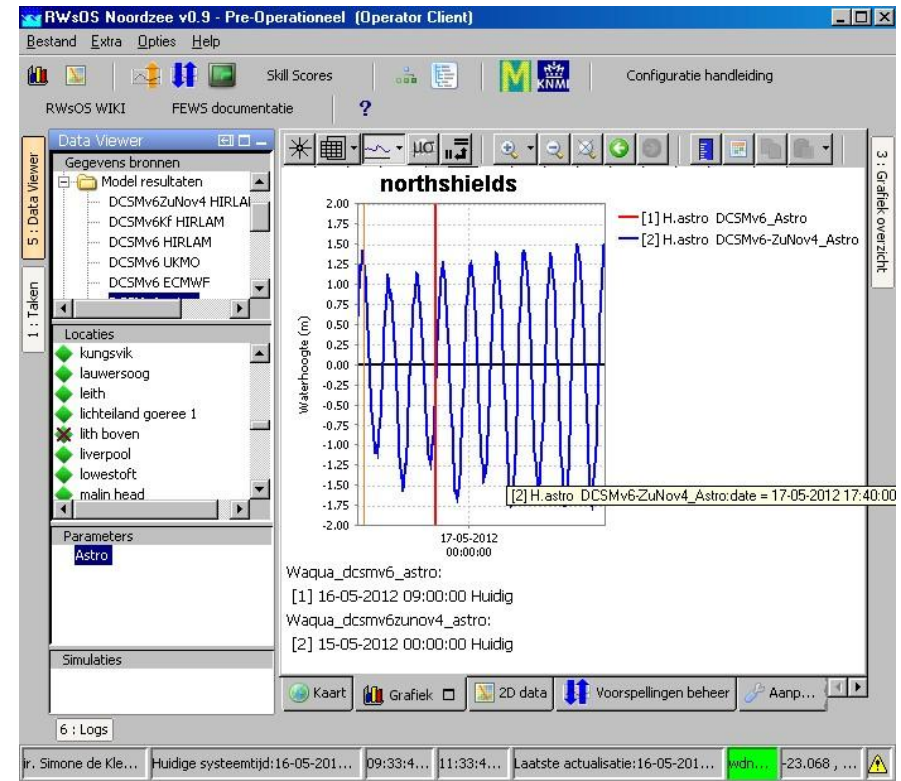
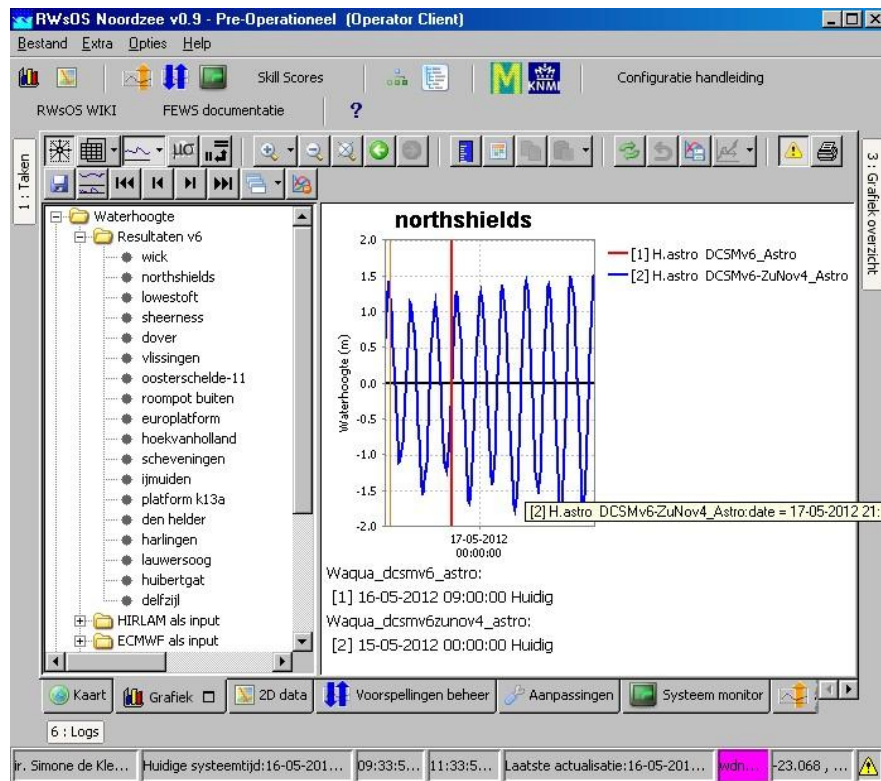
- More compact legend (hide redundant information)
- Show statistics of first timeseries (by default)
- More accentuated 0-line (configurable)
- Automatically show more than 1 forecast



TimeSeries Display

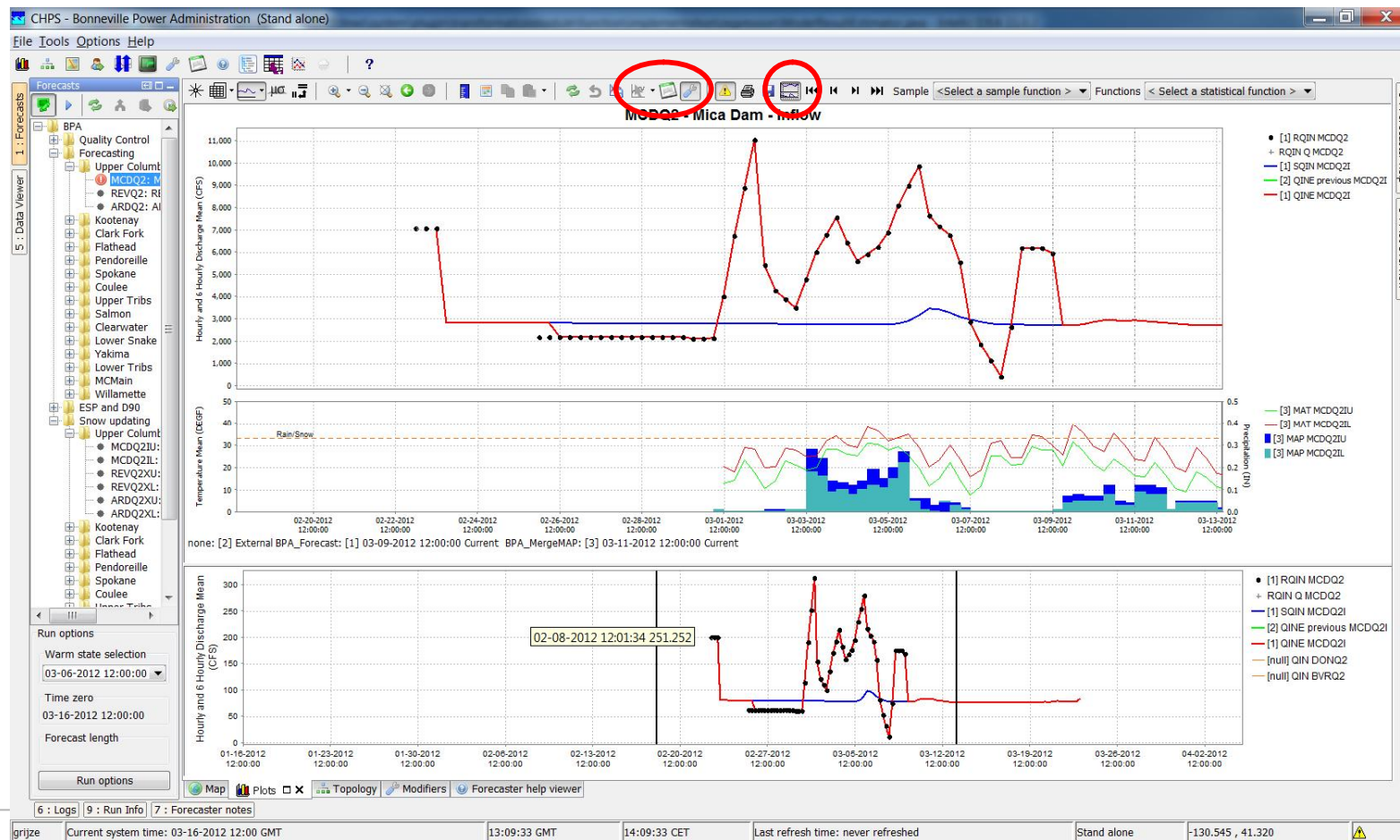


Hot-key combination to switch between the data filter menu and the standard graphs menu in the Graph display (Ctrl-G)

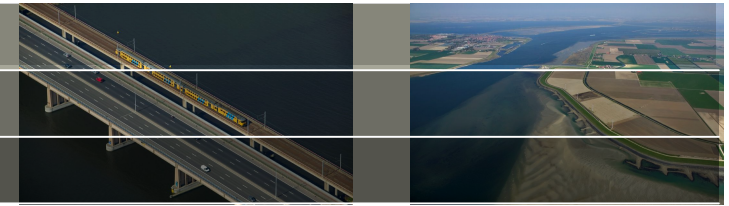


TimeSeries Display

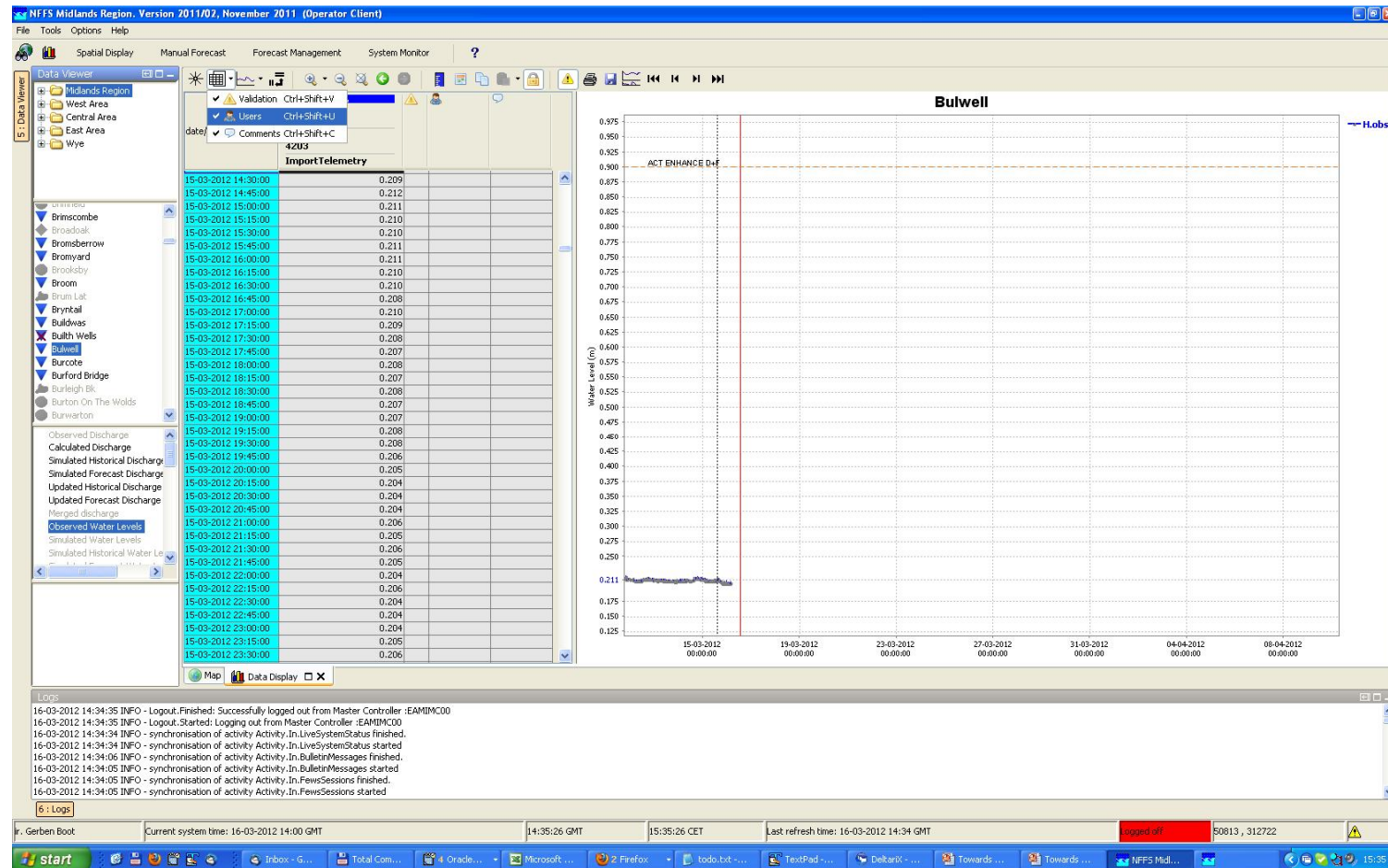
- LongTerm Scroller
- Easy switch between: read-only, edit, modify mode or as 'startup



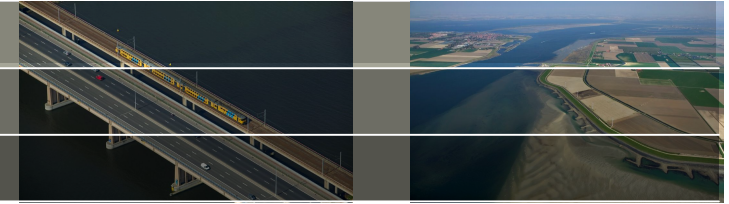
TimeSeries Display



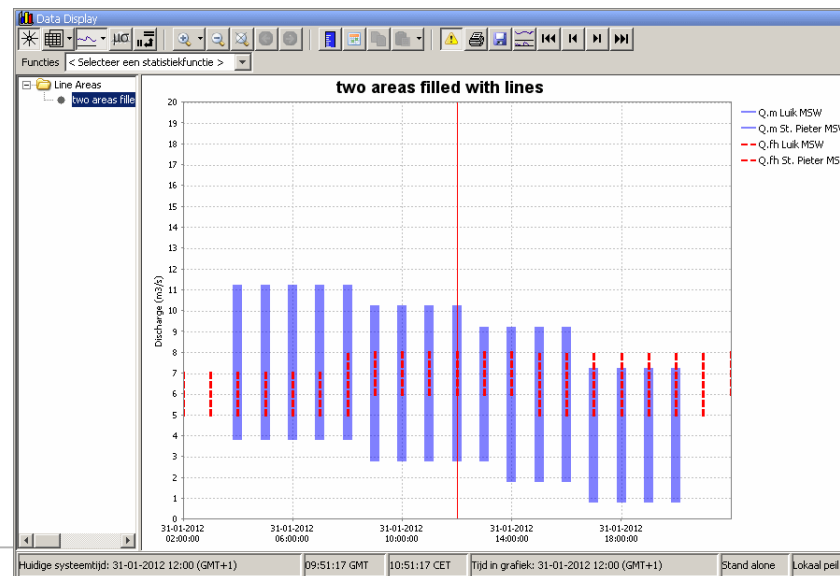
- Comments, Validation, Users and their History



TimeSeries Display

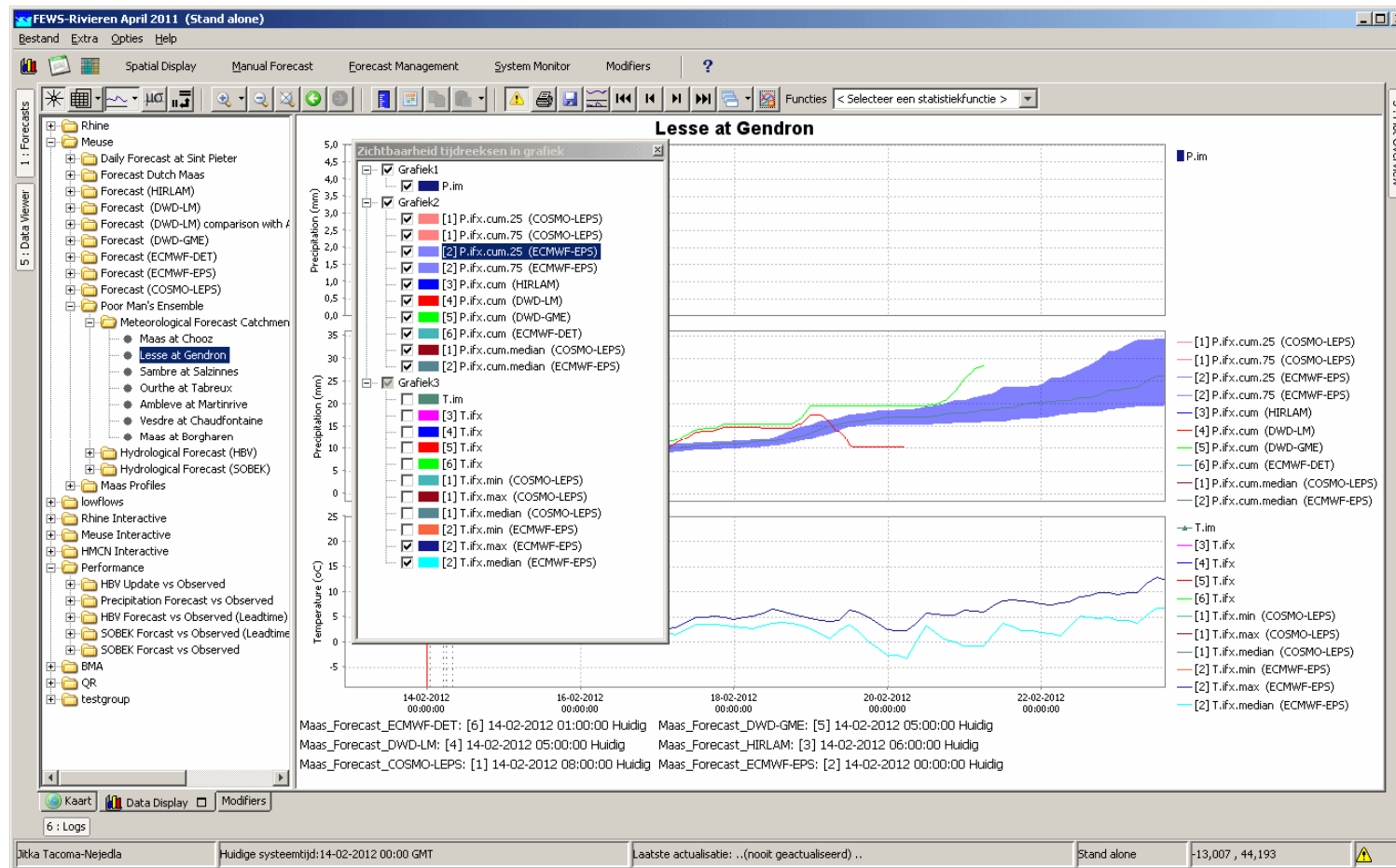


- Area fill also with lines
- Improved interactivity between Spatial Display and Timeseries Display
 - less mouseclicks, more than one location/cell can be opened at the same time
 - Add extra datalayers to either TSD or SD by configuration
 - Open either TS-Display or TS-Editor

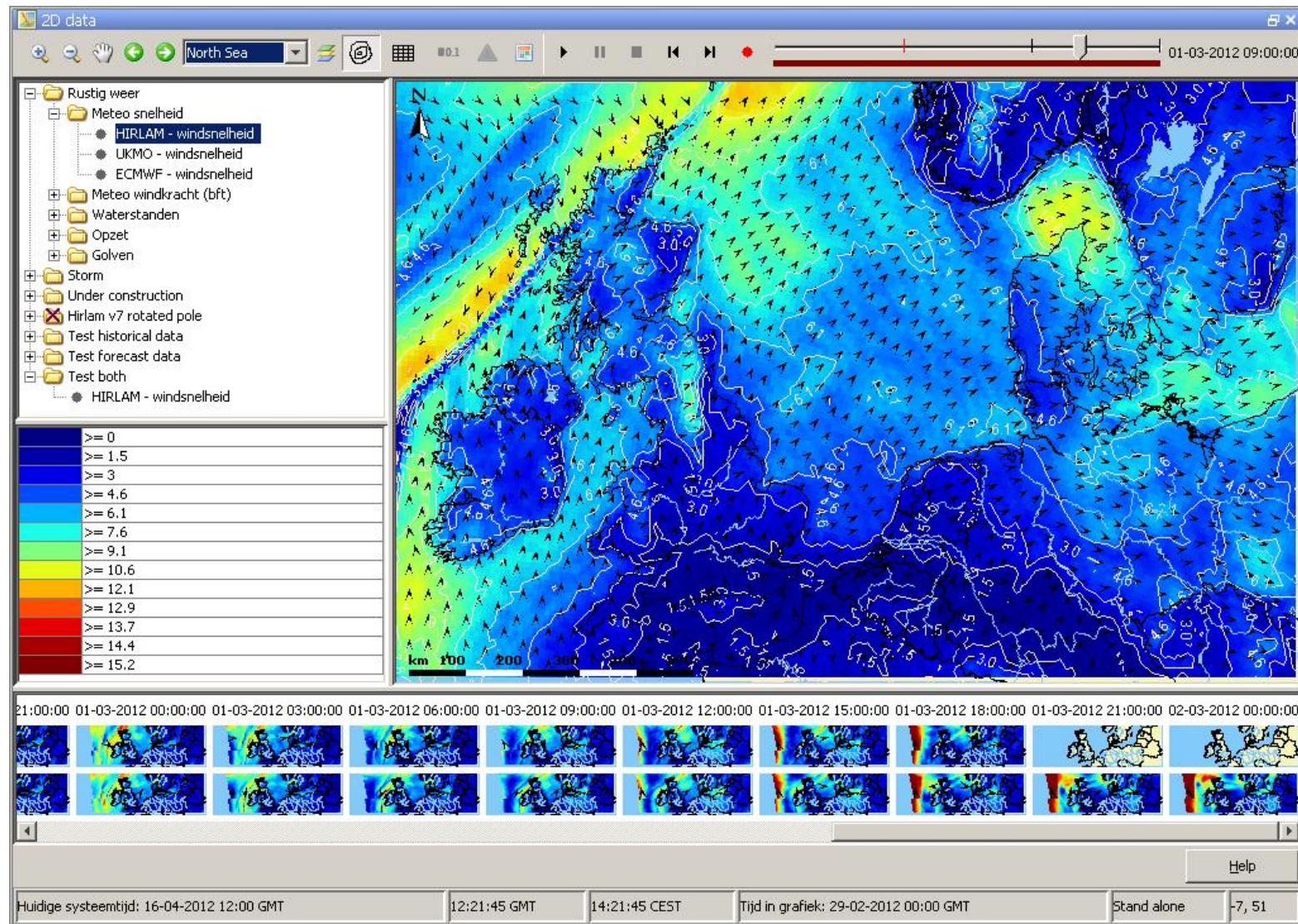


TimeSeries Display

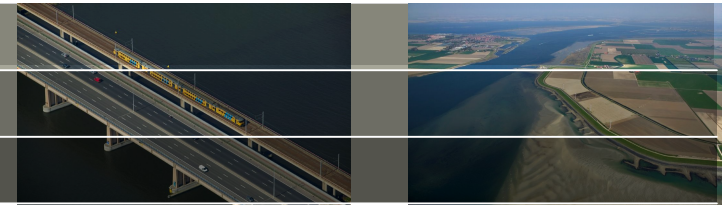
- More flexible in visibility of timeseries (like maplayers)



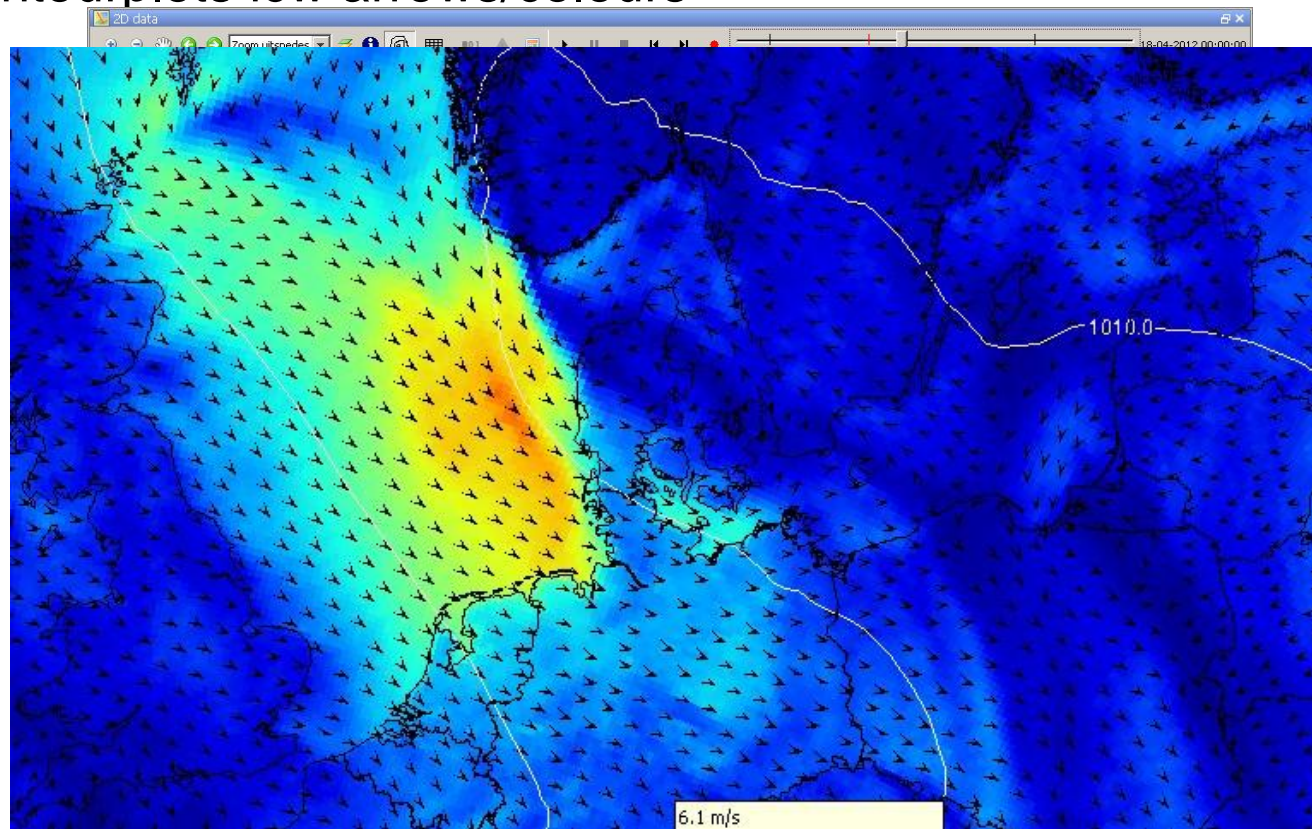
Spatial Display: Spatial Thumbnails



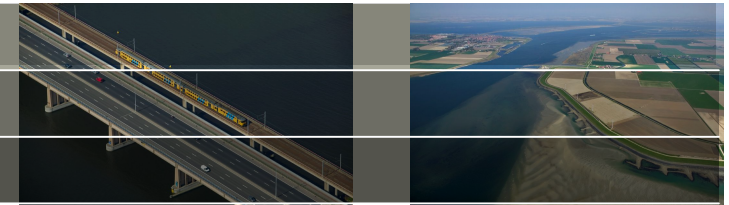
Spatial Display



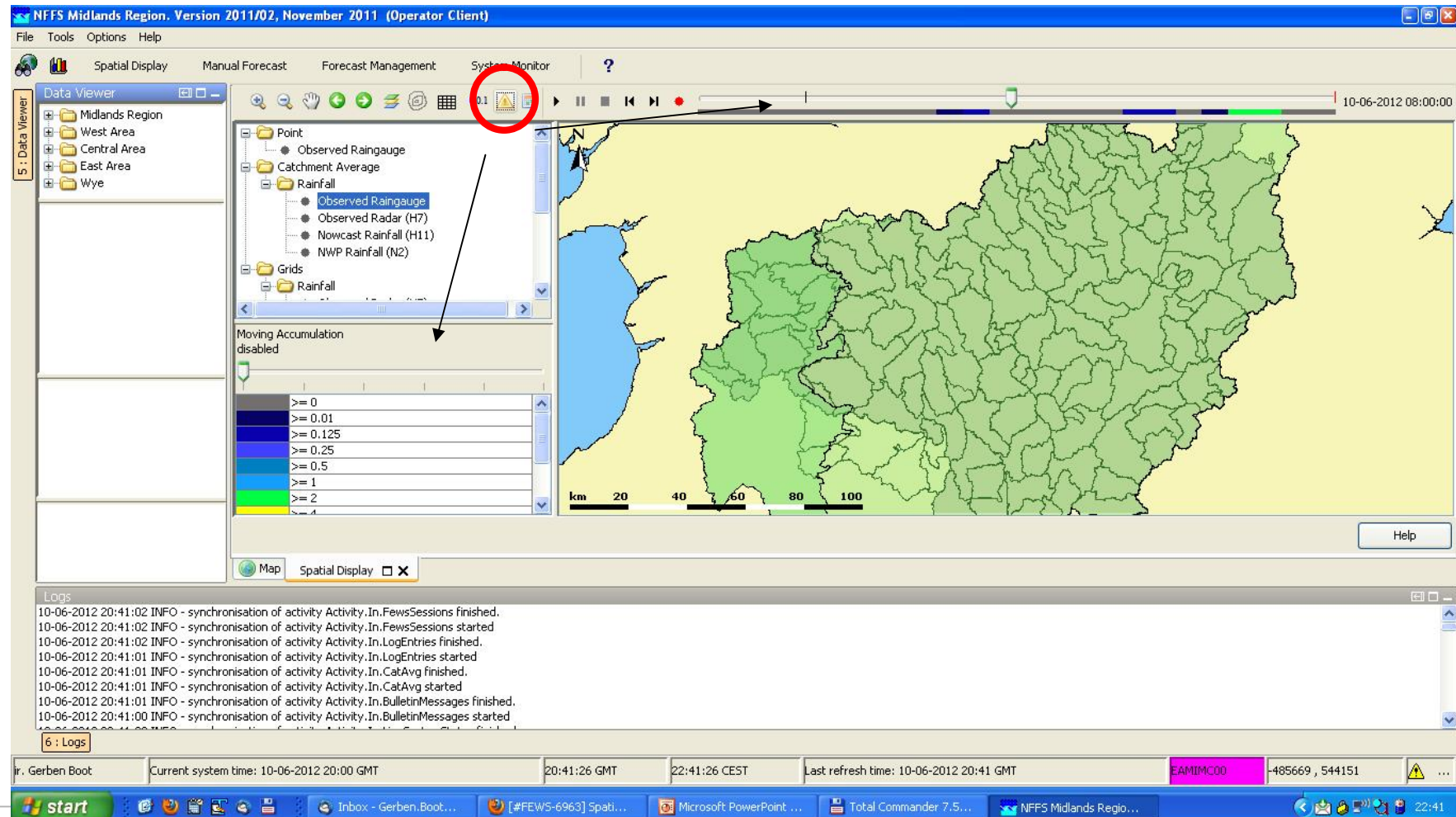
- Reversible legend
- Fluent legend
- Contourplots icw arrows/colours



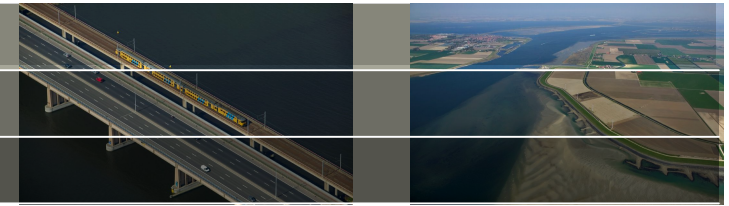
Spatial Display



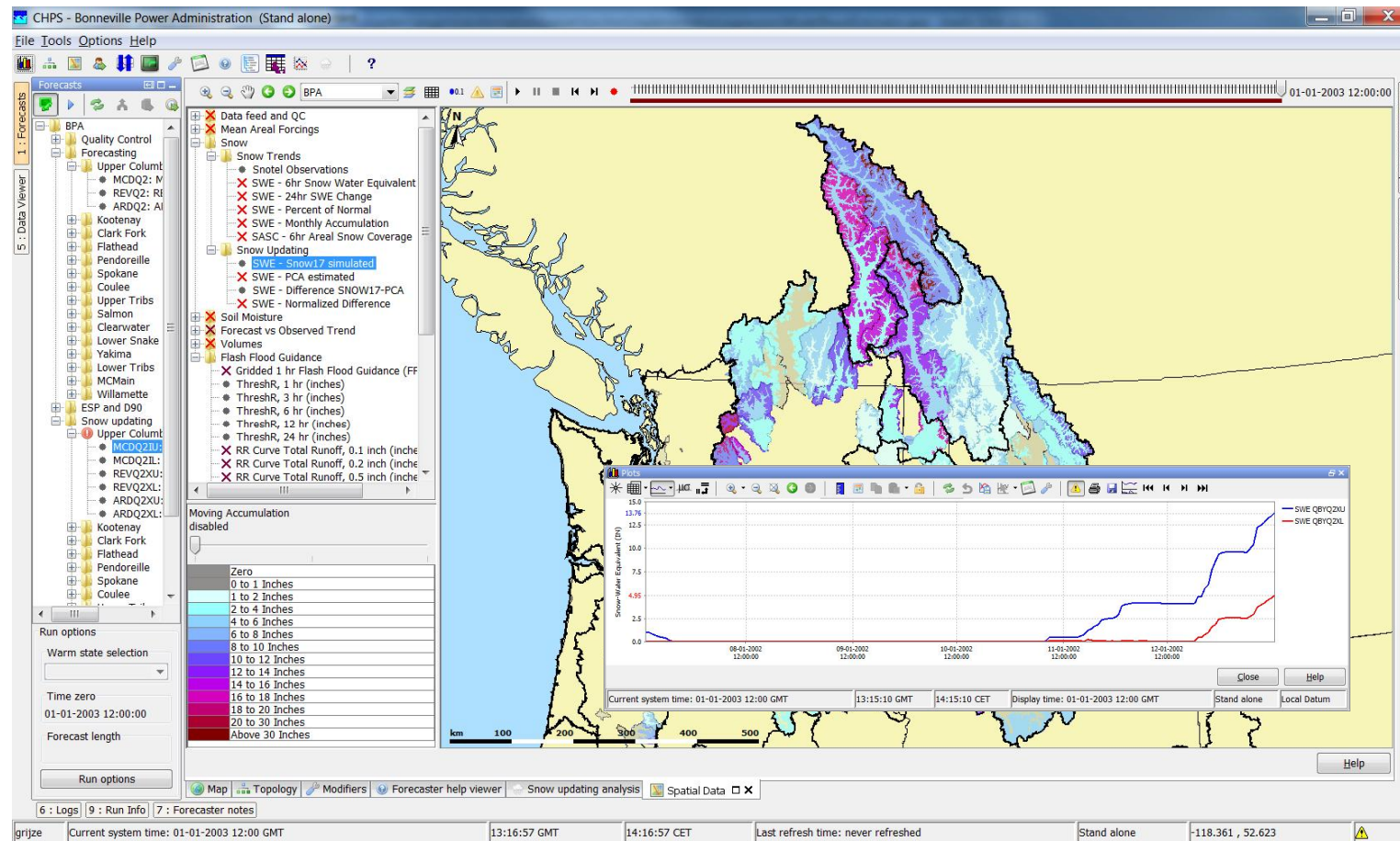
- Coloured bar: values or quality flags



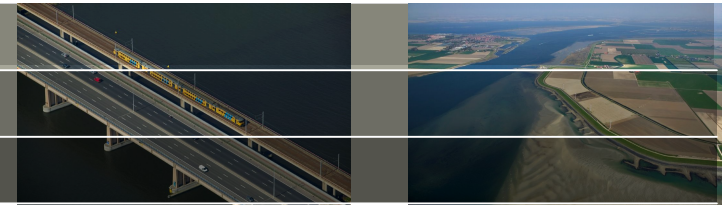
Spatial Display



- Selecting pixels results in adding individual series to same graph

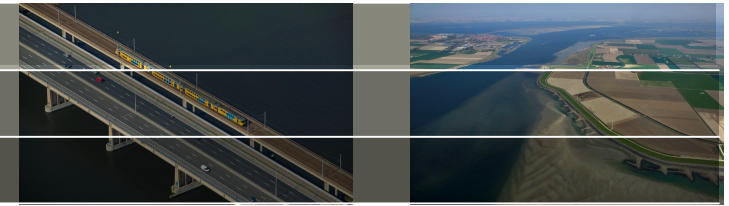


Spatial Display



- Improvements
 - Tooltips added to animate buttons
 - Sliders shows “no data timesteps”
 - Save to *.png file has date/time on dialog comes up with filename suggestion
 - Attribute value can be used for classification (Icon Size)

Modifier Display



- Temporary change in LocationAttribute
- Add reference timeseries (for comparison) to graph

KRW-VSS Analyse Tool (versie increment 1) (Stand alone)

Bestand Extra Opties Help

Simulatie Parameters Gevalideerde Waterbalans Gevalideerde ESF'en VSS-web Gebied ?

1 : Interactief 2 : Data Viewer 3 : Plot Overview

Waterbalans ESF1 ESF2 ESF3

Run options

Cold state selection

default

Start: 23-11-2005 00:00:00

Time zero

01-01-2010 00:00:00

Forecast length

Run options

Eigenschappen modifier

Type ESF1

Naam ESF1

Start tijd 01-01-1800 01:00:00

Eind tijd 01-01-3000 01:00:00

export Opslaan

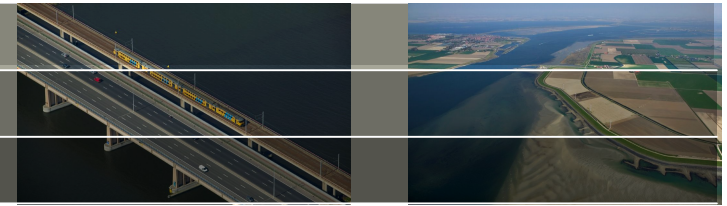
Gebied

eigenschap	Stichtsch Ankeveense Polder	
	aangepaste waarde	originele waarde
ID van het aanafvoergebied	3201	3201
naam van aanafvoergebied	Stichtsch Ankeveense Polder	Stichtsch Ankeveense Polder
Gemiddelde diepte aan-afvoer gebied [m]	1.5	1.5
Aandeel Moeras [0-1]	0.0	0.0
Strijklengte [m]	300.0	300.0
Extinctie [m]	3.0	2.0
Sediment Type (klei = 1, veen = 5, zand = 6)	66.0	5.0
inactief = debiet is vaste waarde, actief = debiet is tijdsreeks berekend door de Waterbalans Module	1.5	1.5
Debiet in [mm/d]	1.5	1.5
P norm concentratie [mg/l]	0.05	0.05
N norm concentratie [mg/l]	0.0	0.0
Gebruik PCloke of PCditch (inactief = PCditch, actief = PCloke)	<input checked="" type="checkbox"/>	<input checked="" type="checkbox"/>
Locatie ID van de representatieve fosfaat tijdsreeks	SAP044	SAP044
Kies gemiddelde toepassing (inactief = zomer, actief = jaar)	<input checked="" type="checkbox"/>	<input checked="" type="checkbox"/>
Expert value Gemiddelde diepte aan-afvoer gebied [m]	0.0	0.0
Overrule (= actief) Gemiddelde diepte aan-afvoer gebied [m]	<input type="checkbox"/>	<input type="checkbox"/>
Expert value Aandeel Moeras [0-1]	0.0	0.0
Overrule (= actief) Aandeel Moeras [0-1]	<input type="checkbox"/>	<input type="checkbox"/>
Expert value Strijklengte [m]	0.0	0.0
Overrule (= actief) Strijklengte [m]	<input type="checkbox"/>	<input type="checkbox"/>
Expert value Extinctie [m]	0.0	0.0
Overrule (= actief) Extinctie [m]	<input type="checkbox"/>	<input type="checkbox"/>
P norm concentratie [mg/l]		

6 : Logs

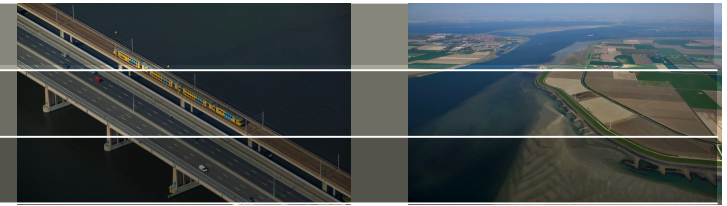
grijze Huidige systeemtijd:01-01-2010 00:00 MET 14:20:00 CET Stand alone 109273 , 450434

Other displays



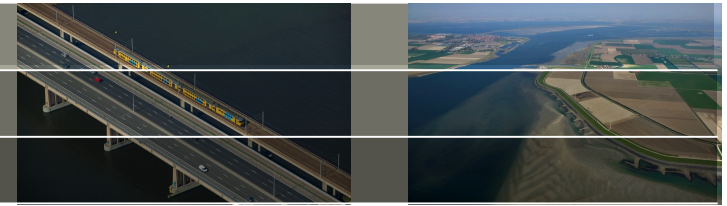
- Schematic Status Display
 - All Report Module Tags also available in Schematic Status Display (e.g MaxValue, MaxWarningLevel)
 - Configuration options to open up
 - > graph and/or table from SSD
 - > (bookmark in) external pdf document
- Modifier Display
- Manual Forecast Dialog
 - Macro button added
- Database viewer
 - Open up Database Viewer (show all series based on workflows) or as “Timeseries Information” (selection only + hide the workflows list)

Modules



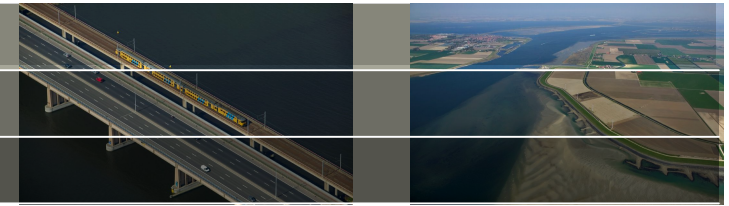
- Secondary Validation
 - Logical expressions possible (and/or)
 - Configuration options:
 - > Compact log message
 - > Only logging without changing the output flag
 - > Use of locationAttributes in logmessages
 - Spatial homogeneity test
- Transformation
 - Option to have NaN as output of a UserSimple Transformation
 - Merge: extra-output series showing which input was used
 - Generate ensemble members based on all possible input series (with textual description)
- Watercoach
 - Improved connectivity (PI service)
 - Option to use realistic “delay” before timeseries are visible

Imports/Exports



- Imports
 - EASE grids
 - NetCDF
 - > data with 1D spectrum time series for separate locations.
 - UMAquo CSV, XML
 - iHistorian (database)
 - Config option to skip 'n' number of lines at header
 - Hessen (D)
 - Inia
- Exports
 - NOOS
 - UMAquo CSV, XML
 - Improved NetCDF (grid location info, CF compliant, standard names, ensembles)

Webservices

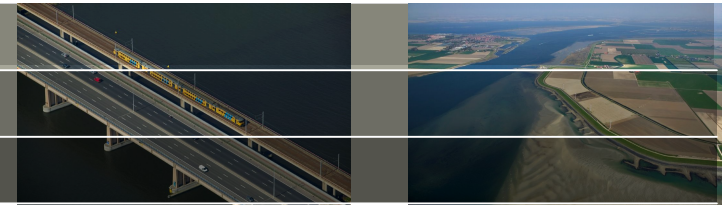


- UMAquo (incl schema checking)
- Improved support of WFS and WMS map layers
- WMS supports *.gif
- The DataAccessComponent is developed to allow direct access to the Datastore. It can be loaded in Tomcat and can be accessed and shared by the webservices hosted in Tomcat.
It is also possible to use this component in a separate application.

Communication with the Datastore occurs through an interface.

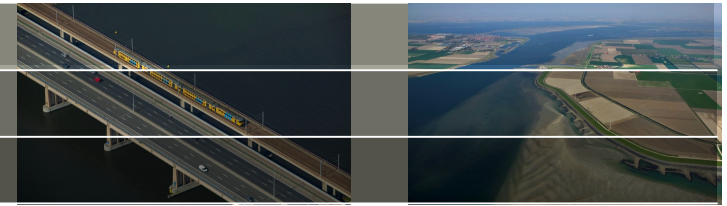
- Connect to OPeNDAP which uses SSL (Secure Socket Layer) certification
- OPeNDAP url settings can contain a reference to T0 (filename pattern)
- Initial development open API (Transformation, Statistical Functions)
- WaterML standard

Other...



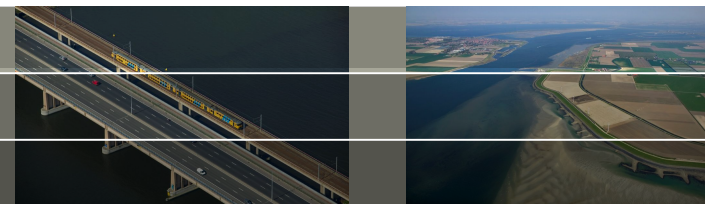
- Log level of validationRuleSets has been made configurable.
- General adapter can loop over locationSets
- Location Attributes references possible in Module Parameter File
- Report Module
 - Improved scaling of graphs
 - Improved header configuration options
 - UnitConversions added
- Tool to generate a shape file (.shp) from a netcdf (.nc) file - <F12>
- User Settings
 - OC stores and re-loads time series selected in time series dialogue and spatial display
- Adapters:
 - GA can write output with headers only
 - D3D adapter improved

Towards 2012.02...

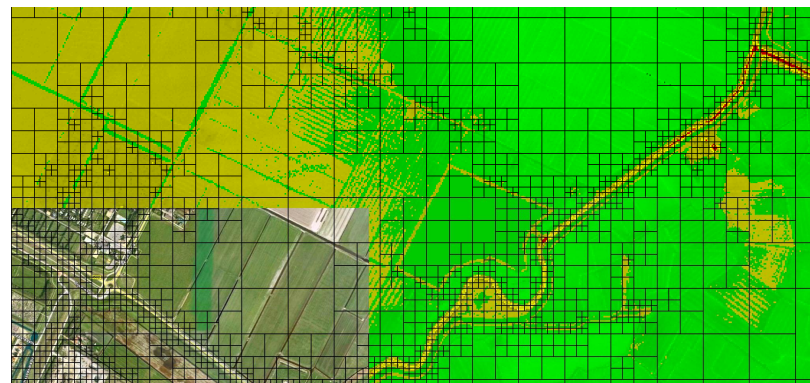


- Groundwater (model) features
- JBOSS 7
- Monitoring options (metrics) in Admin Interface
- Configuration Manager with Direct Database Access
- OpeNDAP improvements (temporary timeseries)
- New Archiving functionality (OpeNDAP)
- Import/Export Module (data-conversion)

Projects

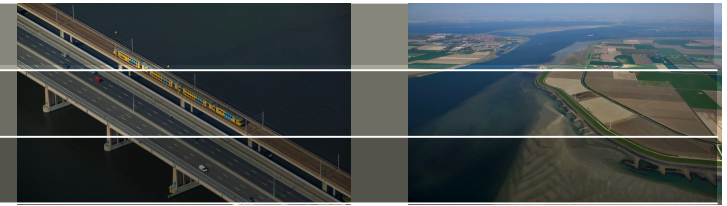


- GO overleg
 - Operation on selection of locations (selection specific calculations)
 - Geographical Version Management
- KRW-VSS
 - Webservices
- BPA
 - Modifiers,
 - Spatial Statistics (on the fly)
- NWS
 - OpenAPI
 - > Accessing the datastore for developments
- Deltamodel
 - FEWS as Computing Facility
- 3Di
 - New Datatype – quad-tree-grids
 - 3Di adapter (without/with interaction)
- Environment Agency
 - ...



Deltares

Procedure 2012.02



- Requests for new features
 - Start (= now)
 - Enddate: wk 27 (1st week of July) – guaranteed in 2012.02
 - Later? Depending on planning/dev. Effort
- Code Freeze: wk 36 (1st week of September)
- Testing: wk 36 – wk 44
- Release: wk 45 (1st week of November)