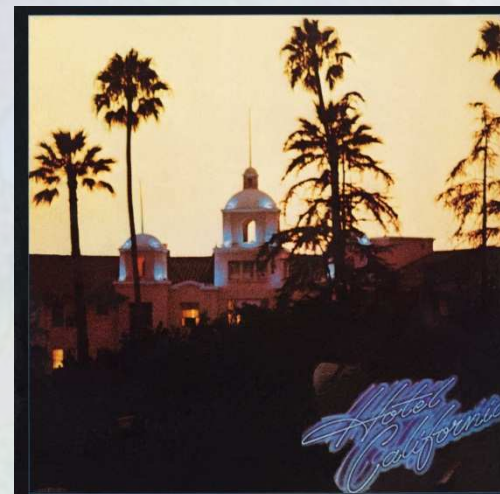


OpenEarth - data, models and tools

Makes your work nicer!



Data Tube

Data SIO, NOAA, U.S. Navy, NGA, GEBCO

dr. ir. Mark van Koningsveld
dr. ir. Gerben de Boer

Van Oord / TU Delft
Deltares / TU Delft



www.openearth.eu

What is OpenEarth

- **Make existing** data, models and tools available
 - increase efficiency of projects
 - prevent double work
 - prevent loss of previous work
 - > due to lack of archiving (no time to store)
 - > due to new bugs (no time to test)
 - make work nicer: less maintenance, more development
- **a data and source code repository**
- **a community**
a repository is useless without people using it
- **a philosophy**
a community is useless without collaboration: **cooperate!**

Some statistics

Commits by date

Since 2008

- **www.openearth.eu – wiki standards and protocols:**
 - > 10.000 visitors each month (since start of log)
- **https://svn.oss.deltares.nl/repos/openearthtools:**
 - > 1.000 users, > 150 developers, > 7.500 commits, > 70.000 changes
- **OpenEarth LinkedIn group**
 - 240 members
- **Adopted by numerous organisations and projects**
 - Deltares, TU Delft, Van Oord, Arcadis, Witteveen+Bos, etc
 - EU FP7 MICORE, Building with Nature, STW NatureCoast, ERC NEMO, EFRO Zandmotor, etc



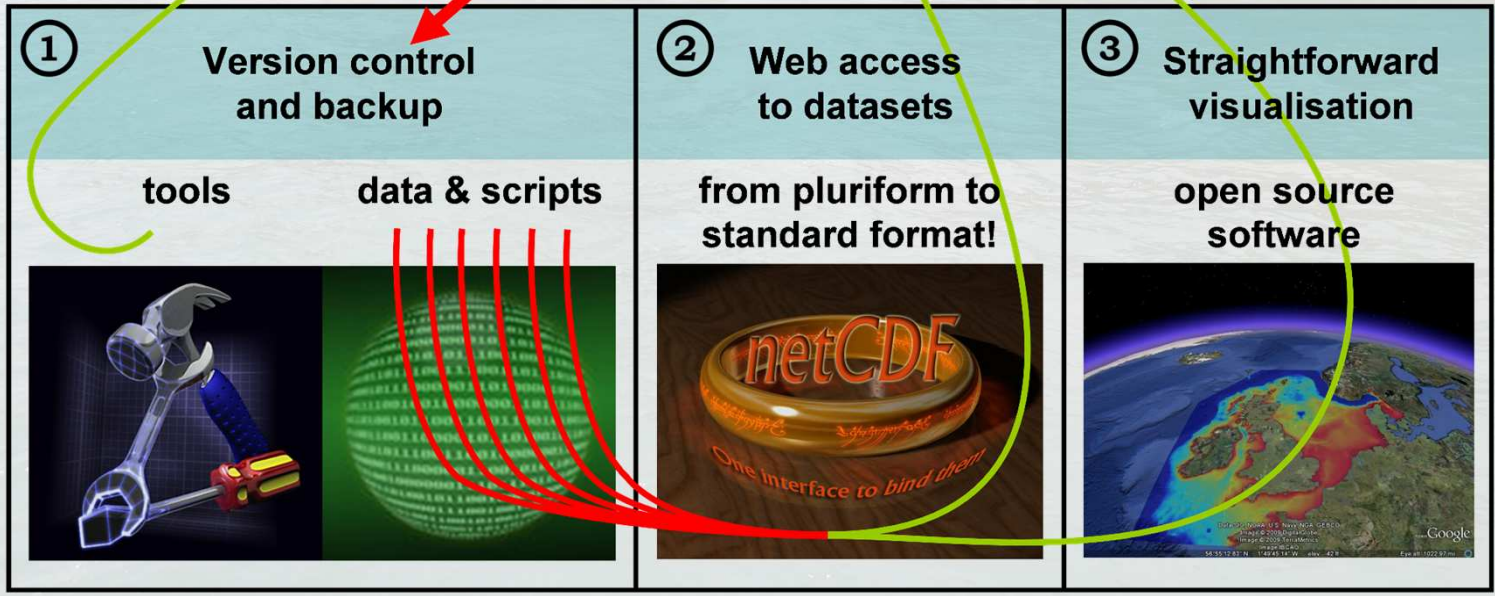
OpenEarth workflow infrastructure and standards

Core elements:

- version control & web access
- data = raw data + script
- one data format vs. many
- central storage vs. decentral
- open source

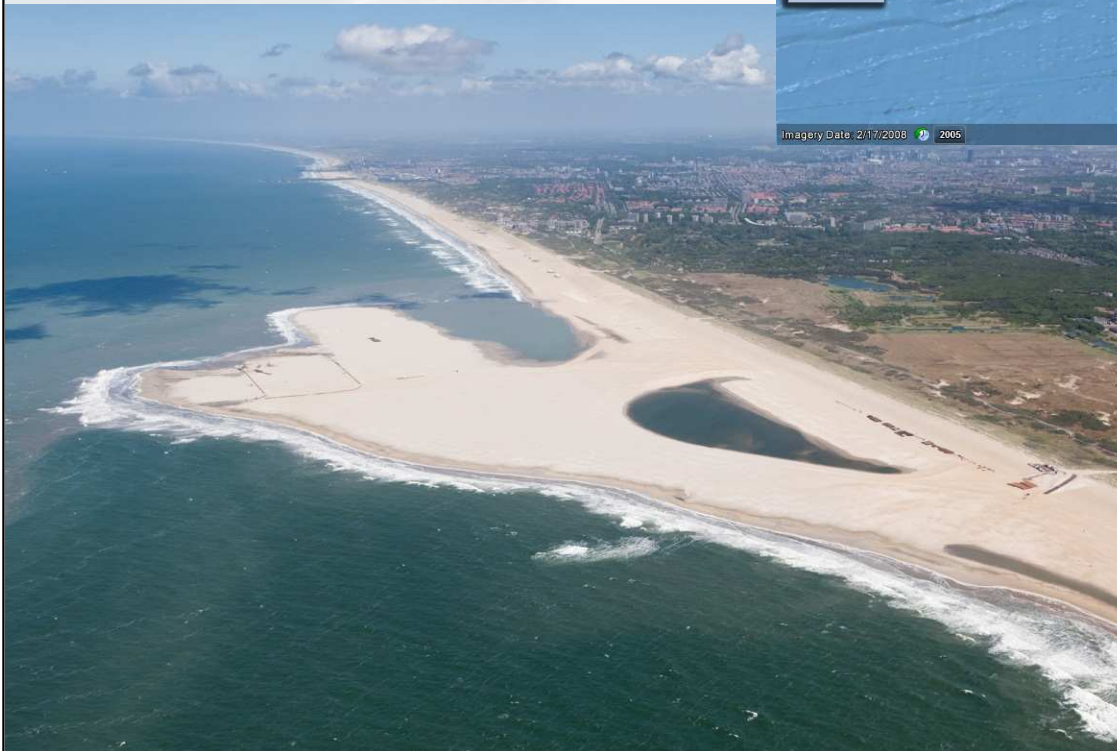
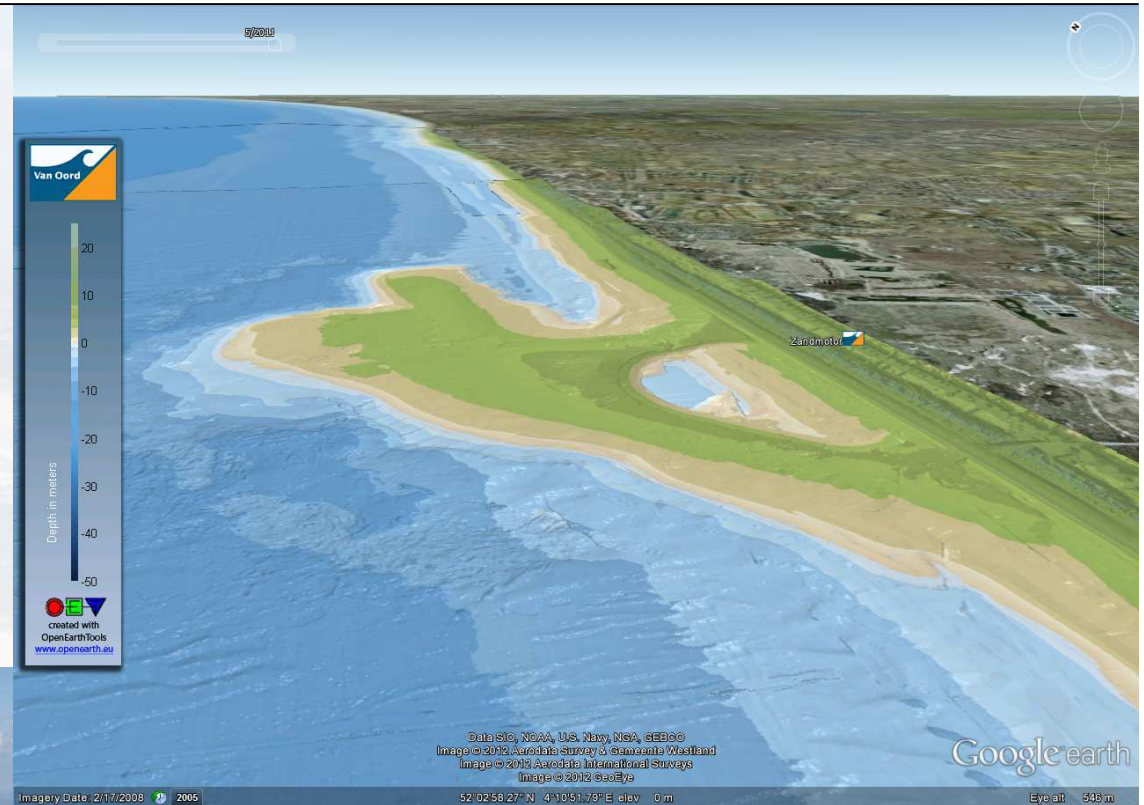


tools
data

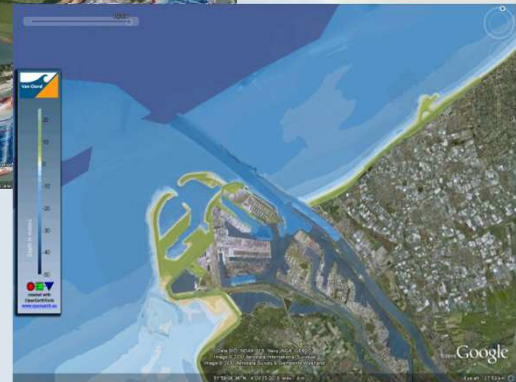
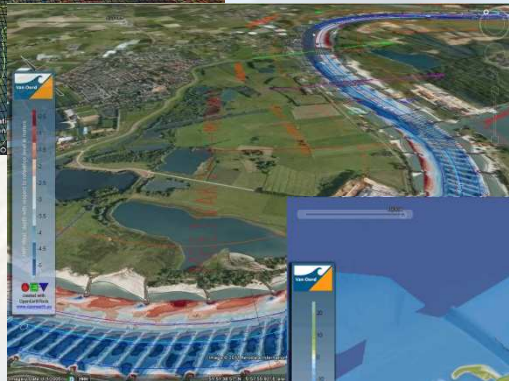
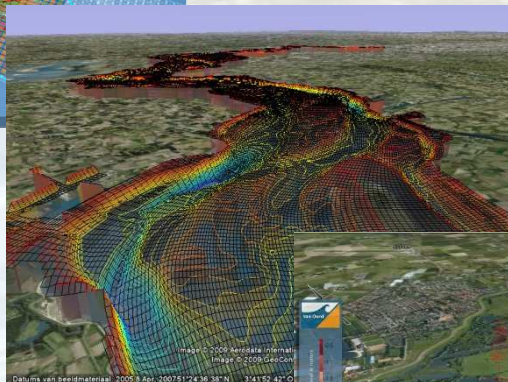
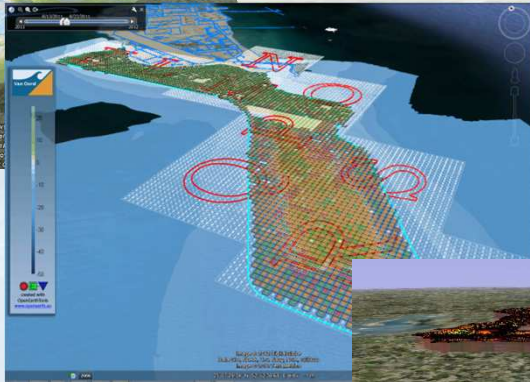


OpenEarth

- 3.5 M€ Building with Nature
- 2.5 M€ MER Metingen RWS
- 3 M€ EFRO Zandmotor
- 4 M€ STW NatureCoast
- 3 M€ ERC Grant NEMO



- Overheden, bedrijven, kennis instituten en universiteiten
- Duurzame dataopslag en doi's door 3TU Datacentre



MCI 2004

by SIO, NOAA, U.S. Navy, NGA, GEBCO
 Image © 2009 GeoContent
 Image © 2009 TerraMetrics
 Image © 2009 Aerodata International Surveys
 51°08'N 4°42'55.99"O verh. 0m

Ooghoogte 4.49 km

gle



www.openearth.eu

m.vankoningsveld@tudelft.nl

g.j.deboer@tudelft.nl

